



CAROLINA
SIGNATURE HOMES



COURTYARD COLLECTION



THE POLO

from the Courtyard Collection

3 bedrooms, 2.5 Baths - 2,622 base square feet



The Polo plan

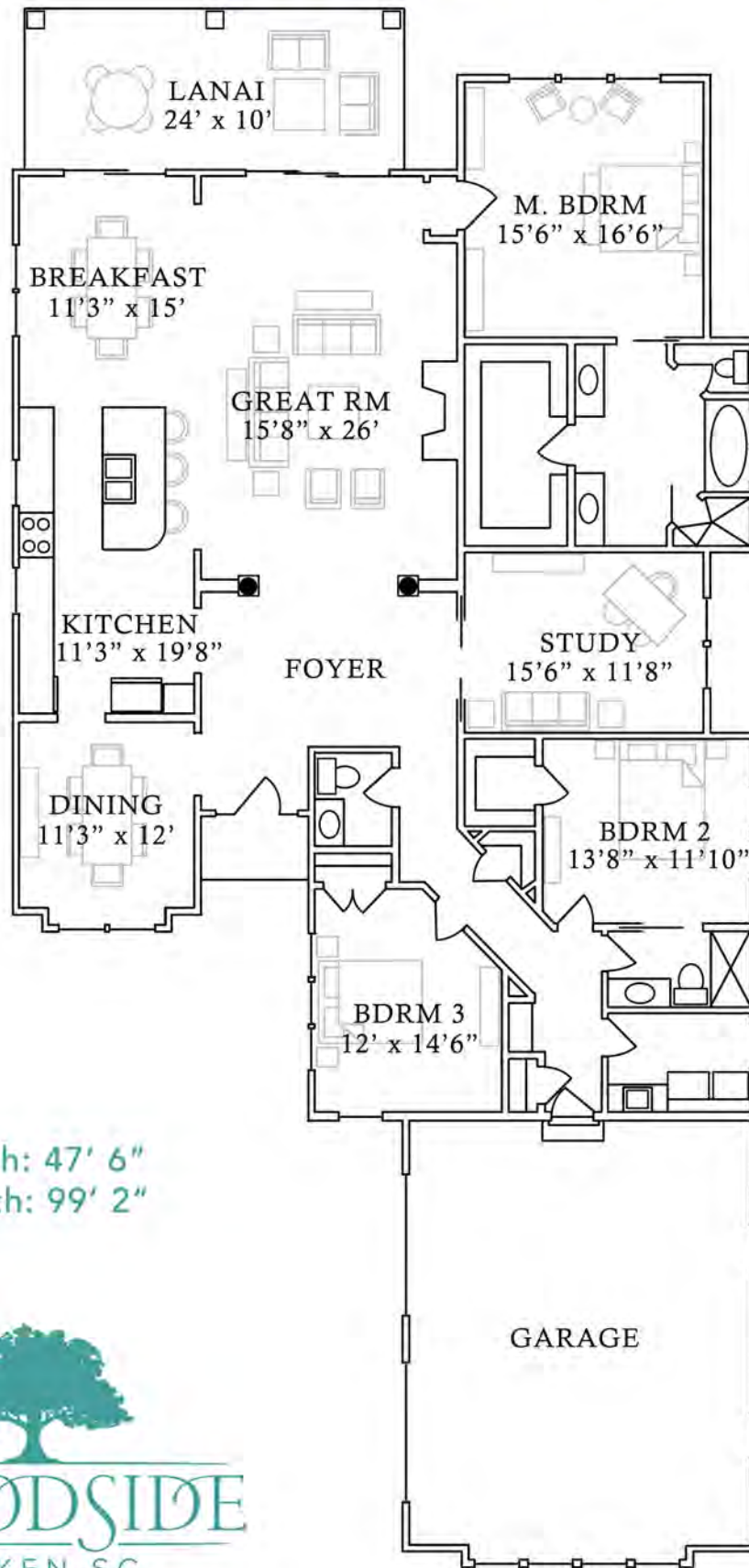
Beautifully appointed oversized Master Suite features a vaulted tray ceiling, tremendous walk-in closet, split vanities, soaking tub, and walk-in shower.

Gourmet cook's dream Kitchen includes an abundance of custom cabinetry, center island with sink and breakfast bar, granite countertops, and stainless steel appliances.

Rich hardwood flooring throughout the main living areas.

Ultra-high efficiency and "green" features include Tech Shield roof sheathing, Low-E windows and doors and 14 SEER HVAC systems with 95% efficiency rating.

THE POLO



Width: 47' 6"
Depth: 99' 2"



F042016

For more information, please call 800.648.3052 or visit us at www.woodsidecommunities.com



THE STEEPLCHASE

from the Courtyard Collection

3 bedrooms, 2 Baths - 2,234 base square feet



The Steeplechase plan

Kitchen features a large center island, custom cabinetry, granite countertops, stainless steel appliances, and Breakfast Room.

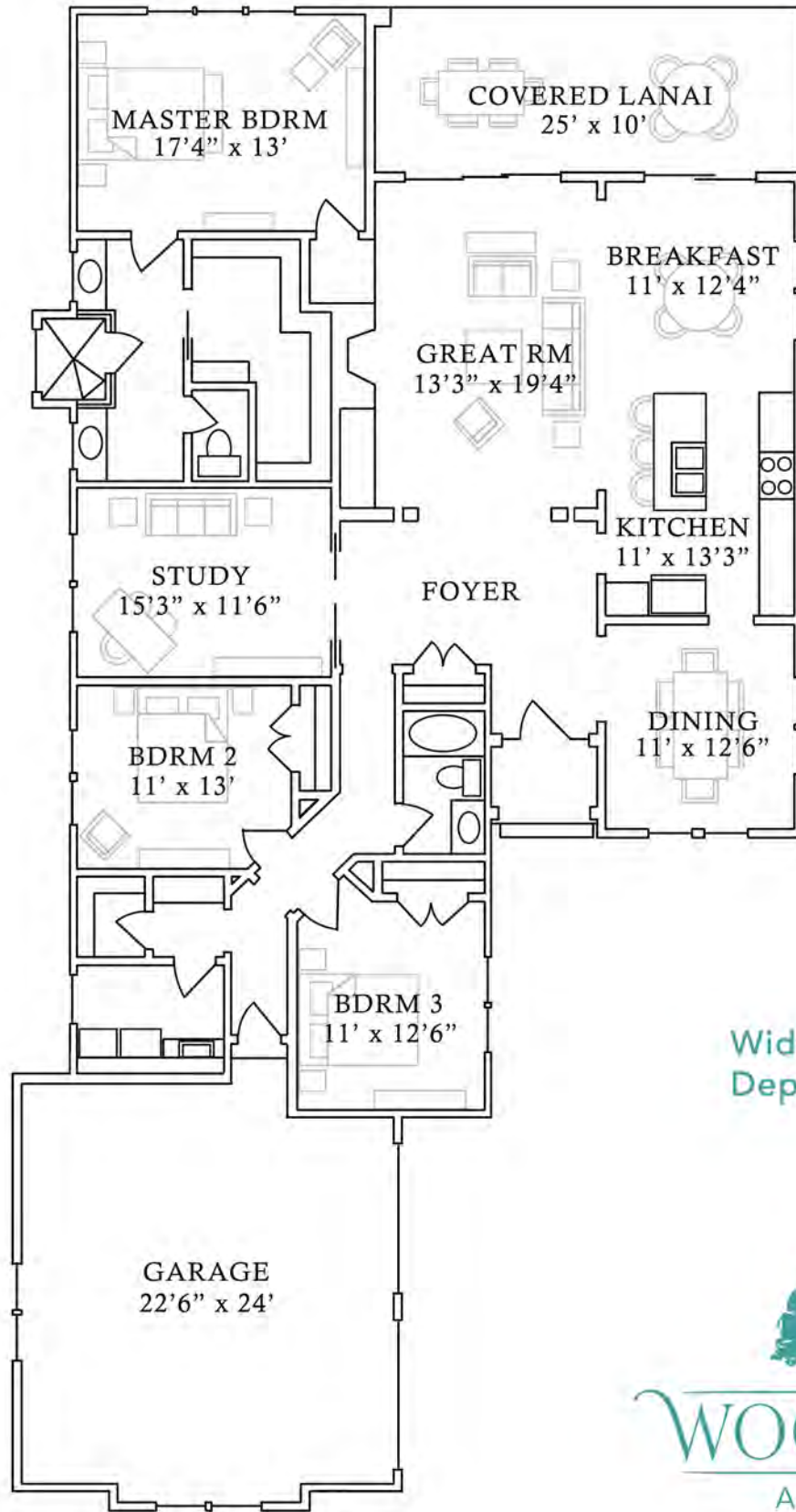
Master Suite is the perfect retreat with expansive window views, enormous walk-in closet, oversized walk-in shower with bench, and dual vanities.

Study makes a perfect Office or Sitting Room.

Ultra-high efficiency and "green" features include Tech Shield roof sheathing, Low-E windows and doors and 14 SEER HVAC systems with 95% efficiency rating.

For more information, please call 800.648.3052 or visit us at www.woodsidecommunities.com

THE STEEPLECHASE



Width: 46' 1"
Depth: 89'



F042016

For more information, please call 800.648.3052 or visit us at www.woodsidecommunities.com