



**CAROLINA**  
SIGNATURE HOMES



# MEADOWS COLLECTION



# THE ALEXANDER II

from the Meadows Collection

3 bedrooms, 2.5 Baths - 2,002 square feet



## The Alexander II

Designed by John Tee, an Atlanta-based architect with extensive *Southern Living* home plan design experience.

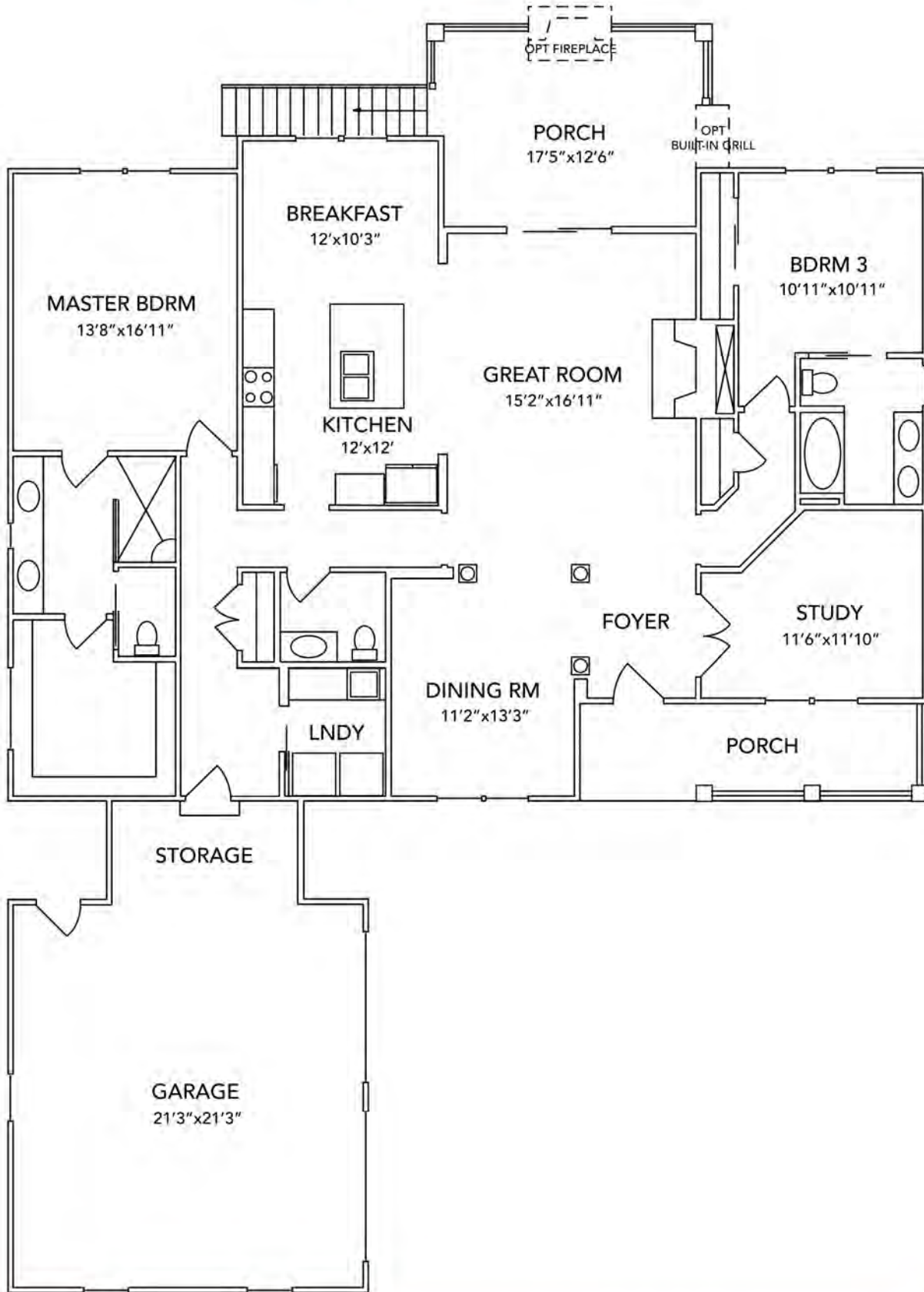
Take in stunning views of the Meadows Neighborhood from the Great Room, Breakfast Room, Master Suite, and Covered Rear Porch.

Enjoy generous storage space with Oversized Garage with Mud Room entry and conveniently designed closet spaces

Energy efficient features include Tech Shield roof sheathing, low-e Anderson vinyl windows and doors, a high efficiency HVAC system, and a "Home Tight" sealing package

For more information, please call 800.648.3052 or visit us at [www.woodsidecommunities.com](http://www.woodsidecommunities.com)

# Alexander II



F071620

Contact us today to schedule a visit:  
Call 803.643.4653 or visit [www.woodsidecommunities.com](http://www.woodsidecommunities.com)



# THE BERKSHIRE

from the Meadows Collection

3 bedrooms, 2 Baths - 2,164 base square feet



## The Berkshire plan

Take in stunning views of the lushly landscaped Meadows Park from the Great Rooms, Breakfast room, Master Suite, and Covered Porch

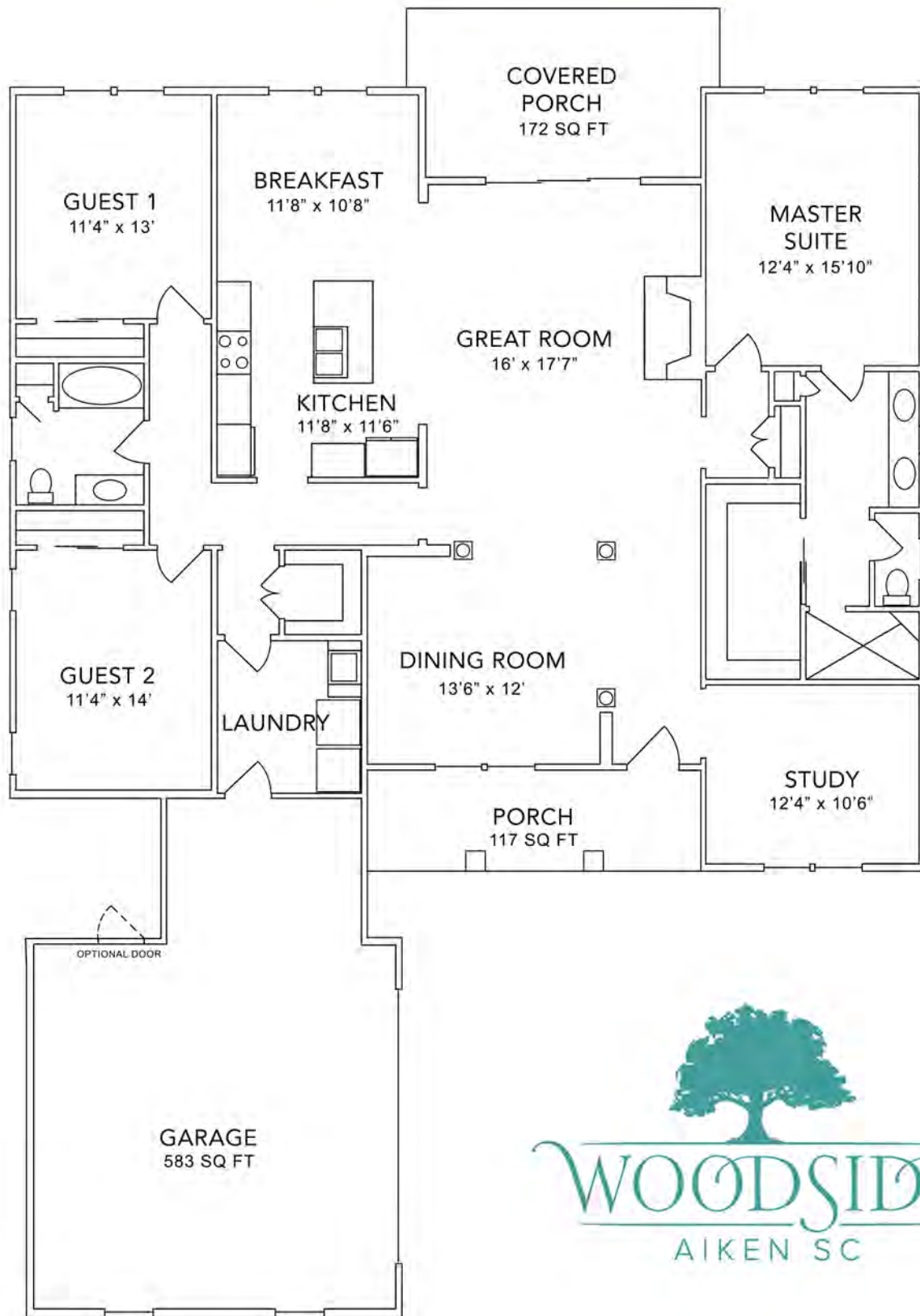
Features include crown molding throughout, luxurious hardwood floors in the main living areas, a gas fireplace, and a beamed ceiling

Designed by John Tee, an Atlanta-based architect with extensive *Southern Living* home plan design experience

Energy efficient features include Tech Shield roof sheathing, low-e Anderson vinyl windows and doors, a high efficiency HVAC system, and a "Home-tight" sealing package

For more information, please call 800.648.3052 or visit us at [www.woodsidecommunities.com](http://www.woodsidecommunities.com)

# THE BERKSHIRE



F111318

For more information, please call 800.648.3052 or visit us at [www.woodsidecommunities.com](http://www.woodsidecommunities.com)



# THE HALIFAX

from the Meadows Collection

2 bedrooms, 2 Baths - 1,958 base square feet



## The Halifax plan

Designer Kitchen features stained maple cabinetry and stainless steel appliances.

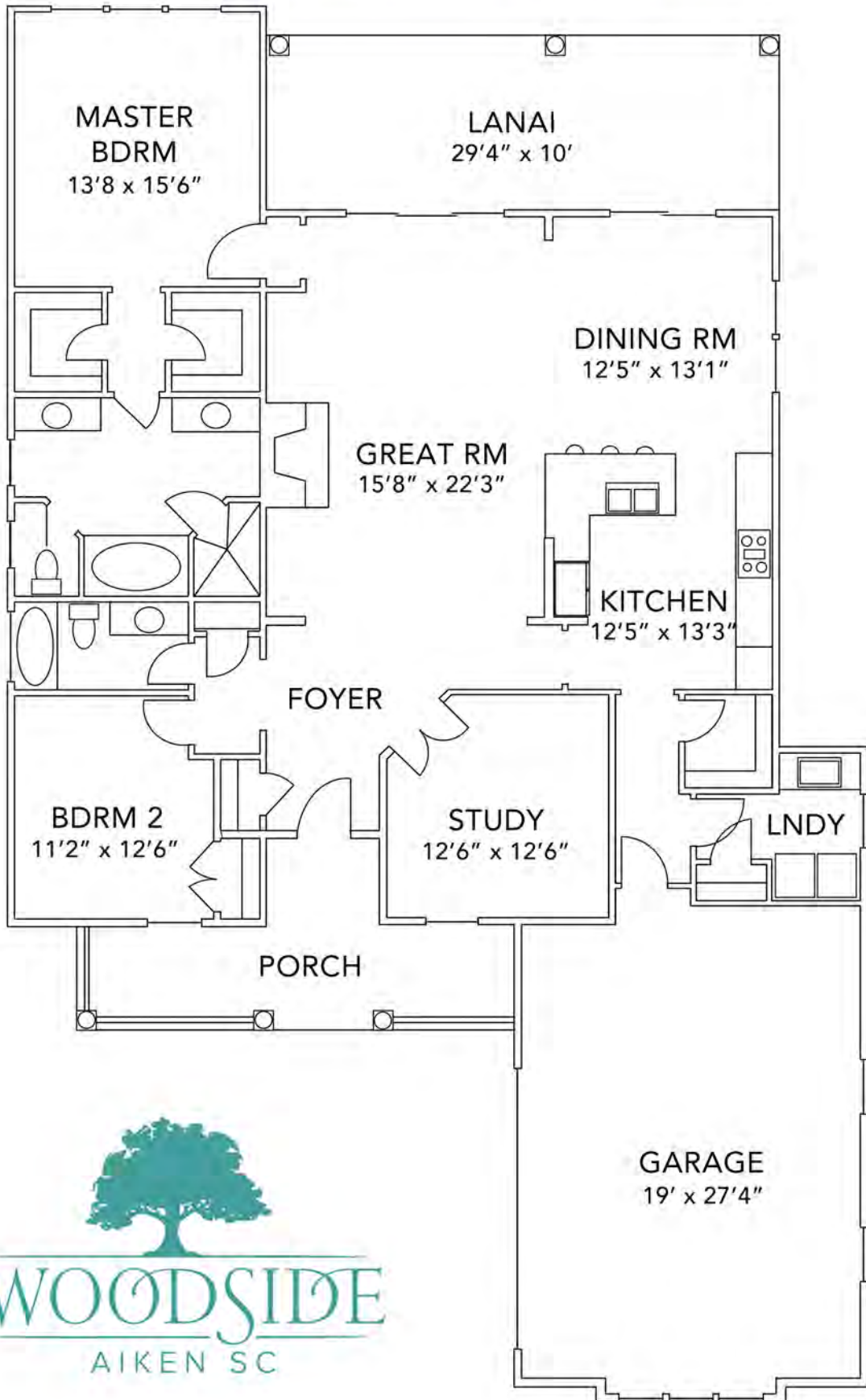
Beautiful hardwood floors throughout the Foyer, Kitchen, Dining Room, Great Room, and Study.

Spacious covered porches with optional outdoor fireplace make for year-round enjoyment of Aiken's mild climate.

Ultra-high efficiency and "green" features include Tech Shield roof sheathing, Low-E windows and doors, and 14 SEER HVAC system.

For more information, please call 800.648.3052 or visit us at [www.woodsidecommunities.com](http://www.woodsidecommunities.com)

# THE HALIFAX



F051817

For more information, please call 800.648.3052 or visit us at [www.woodsidecommunities.com](http://www.woodsidecommunities.com)



# THE WHITCOMB

from the Meadows Collection

3 bedrooms, 2 Baths - 2,216 base square feet



## The Whitcomb plan

Take in stunning views of the lushly landscaped Meadows Park from the Great Room, open Kitchen, Master Suite, and expansive Covered Porch

The 121 square foot Front Porch and 250 square Covered Rear Porch are perfect for entertaining outdoors

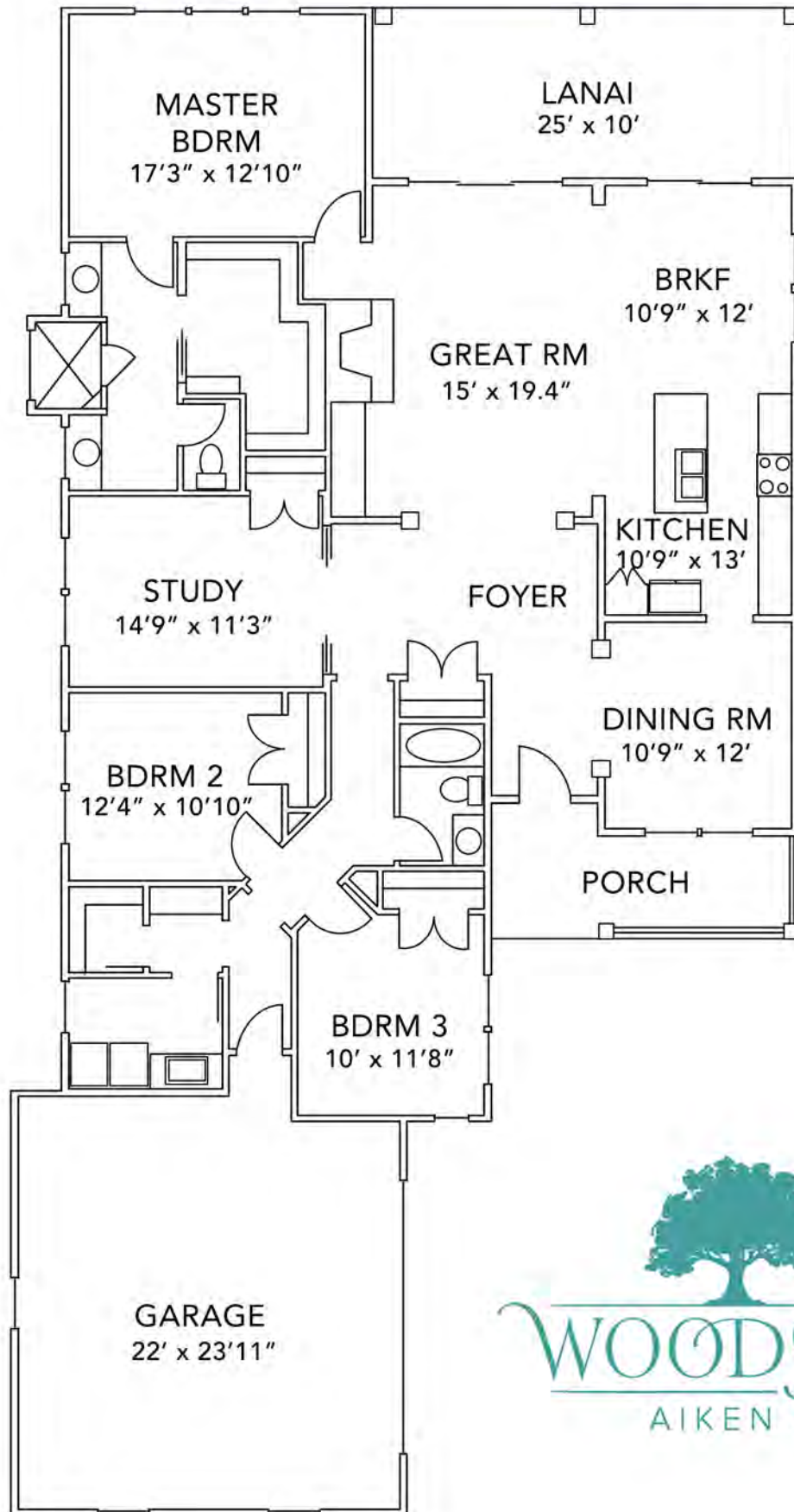
Designed by John Tee, an Atlanta-based architect with extensive *Southern Living* home plan design experience

Energy efficient features include Tech Shield roof sheathing, low-e Anderson vinyl windows and doors, a high efficiency HVAC system, and a "Home Tight" sealing package

For more information, please call 800.648.3052 or visit us at [www.woodsidecommunities.com](http://www.woodsidecommunities.com)



# THE WHITCOMB



F051817

For more information, please call 800.648.3052 or visit us at [www.woodsidecommunities.com](http://www.woodsidecommunities.com)