



CAROLINA
SIGNATURE HOMES



PINE GLEN COLLECTION



THE CLOISTER

from the Pine Glen Collection

2 bedrooms, 2 Baths - 1,852 base square feet



The new Cloister plan

Designer Kitchen with granite countertops, custom cabinetry and Energy Star appliances.

Elegant main level Master Suite with ample walk-in closets, large soaking tub, tile walk-in shower and his-and-her vanities.

Rich hardwood flooring and extensive millwork in main living area.

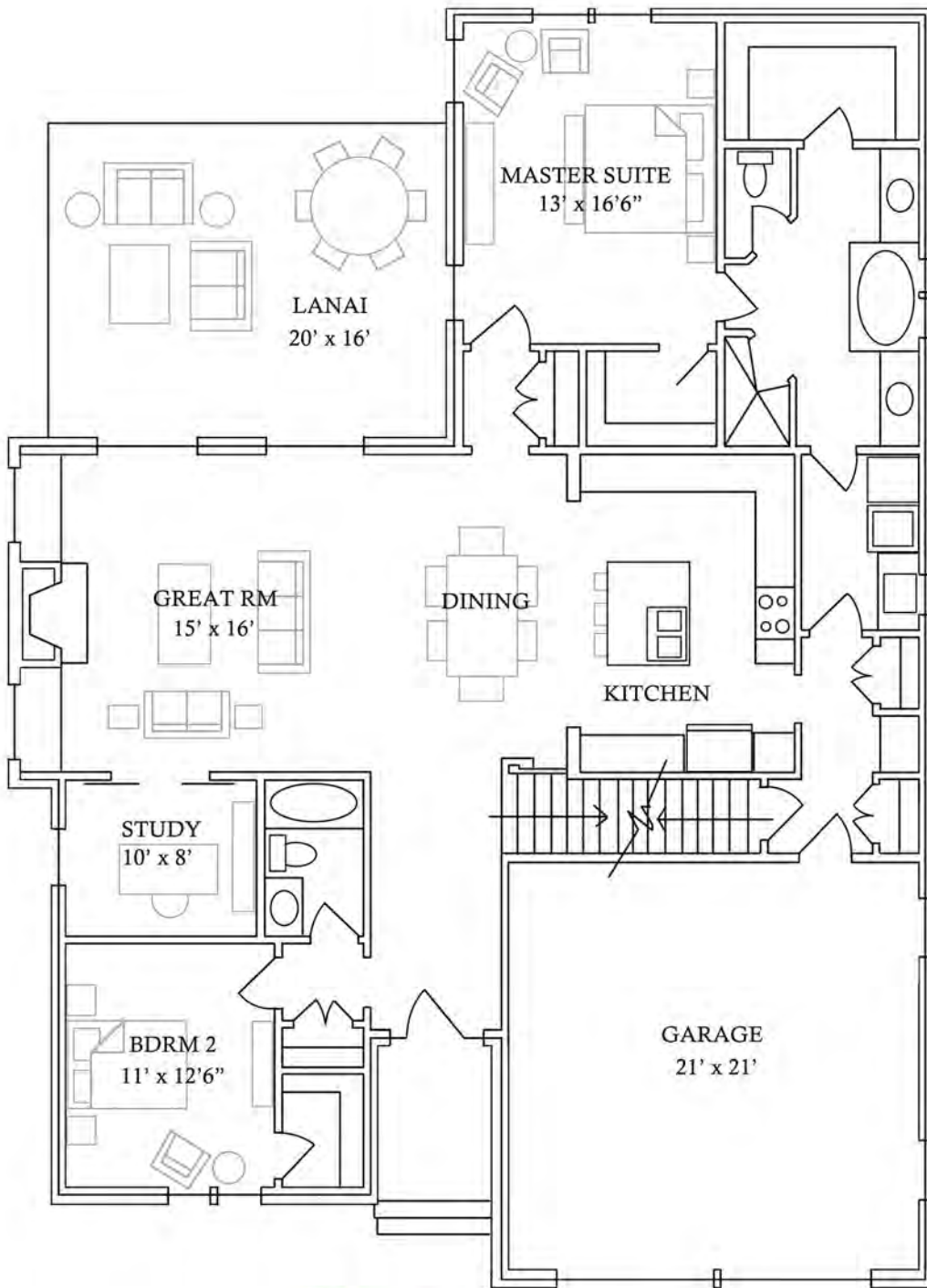
Spacious covered rear Porch extends living and entertaining areas outdoors.

Ultra-high efficiency and "green" features include Tech Shield roof sheathing, Low-E windows and doors and 14 SEER HVAC systems with 95% efficiency rating.

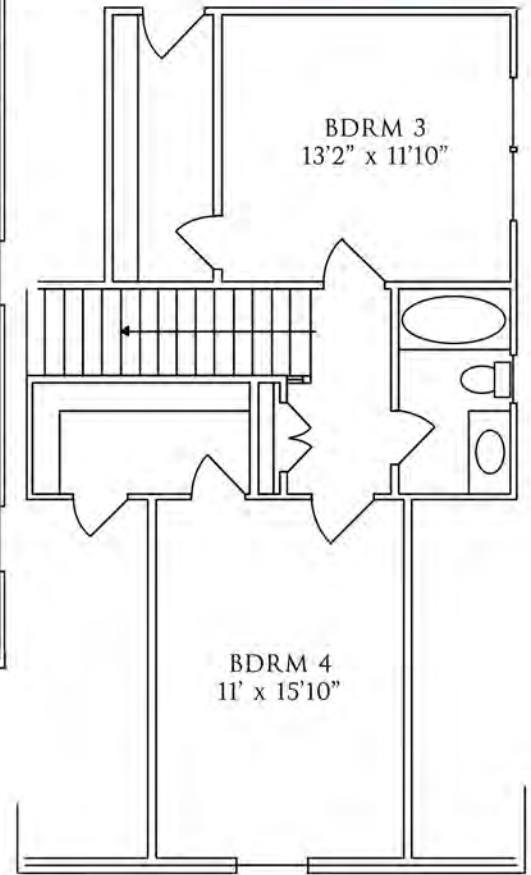
For more information, please call 800.648.3052 or visit us at www.woodsidecommunities.com

THE CLOISTER

Width: 47' 1"
Depth: 65' 1"



Optional
Second Floor



F090816

For more information, please call 800.648.3052 or visit us at www.woodsidecommunities.com



THE GLENDALE

from the Pine Glen Collection

2 bedrooms, 2 Baths - 2,088 base square feet



The Glendale plan

Designer Kitchen with granite countertops, custom cabinetry and Energy Star appliances.

Elegant main level Master Suite with ample walk-in closets, large soaking tub, tile walk-in shower and his-and-her vanities.

Rich hardwood flooring and extensive millwork in main living area.

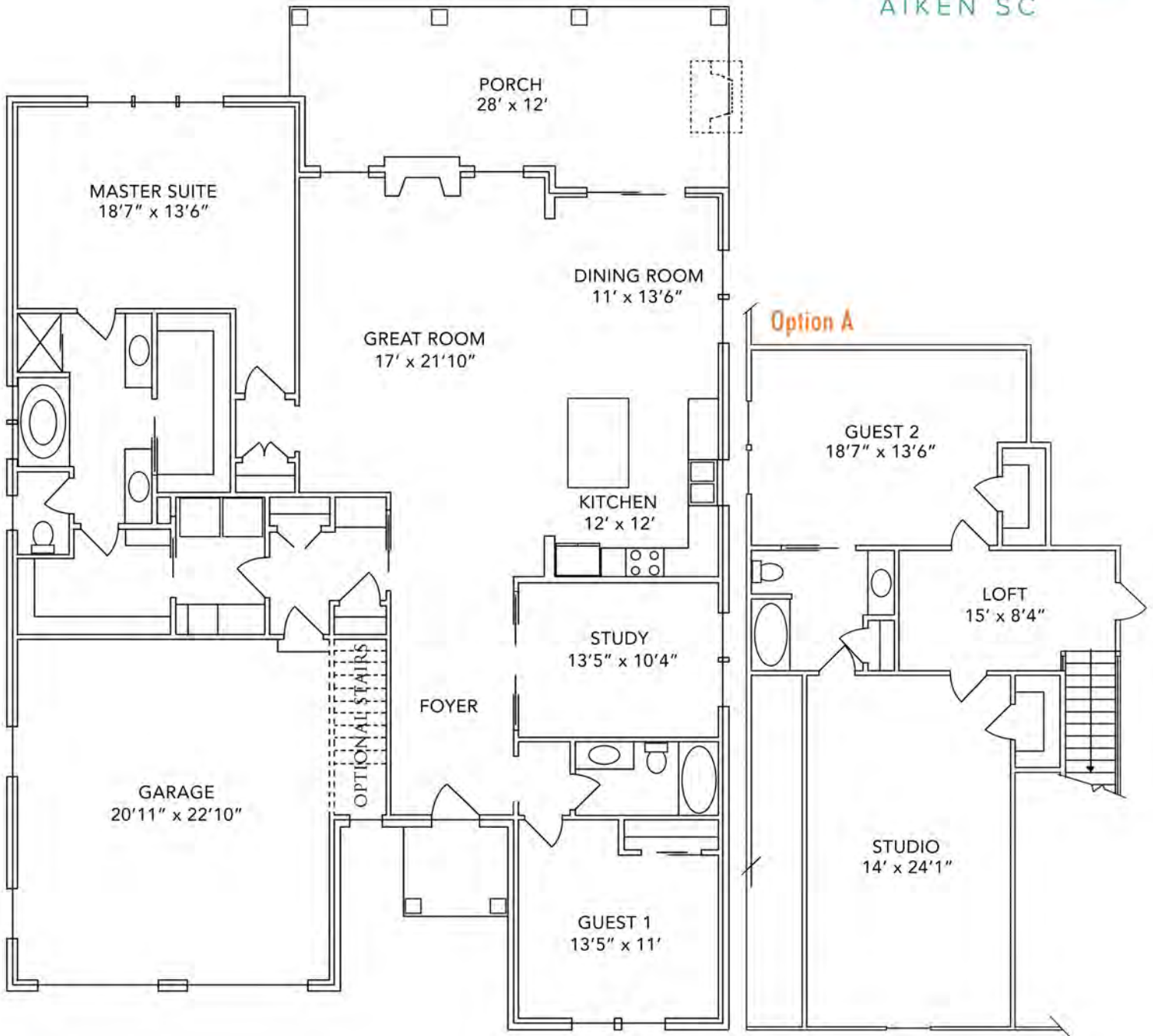
Spacious covered rear Porch extends living and entertaining areas outdoors.

Ultra-high efficiency and "green" features include Tech Shield roof sheathing, Low-E windows and doors and 14 SEER HVAC systems with 95% efficiency rating.

For more information, please call 800.648.3052 or visit us at www.woodsidecommunities.com

THE GLENDALE

Width: 48' 8"
Depth: 68' 4"



F042016

For more information, please call 800.648.3052 or visit us at www.woodsidecommunities.com