



# THE ASHDALE

from the Classic Collection

3 bedrooms, 2.5 Baths - 2,646 base square feet



## The Ashdale

Designer features include dramatic ceilings- barreled ceiling in the entry Foyer and over Master tub, wood trimmed beamed ceiling in the Great Room, slat ceiling in the Dining Area and vaulted tray ceiling in the Master Bedroom.

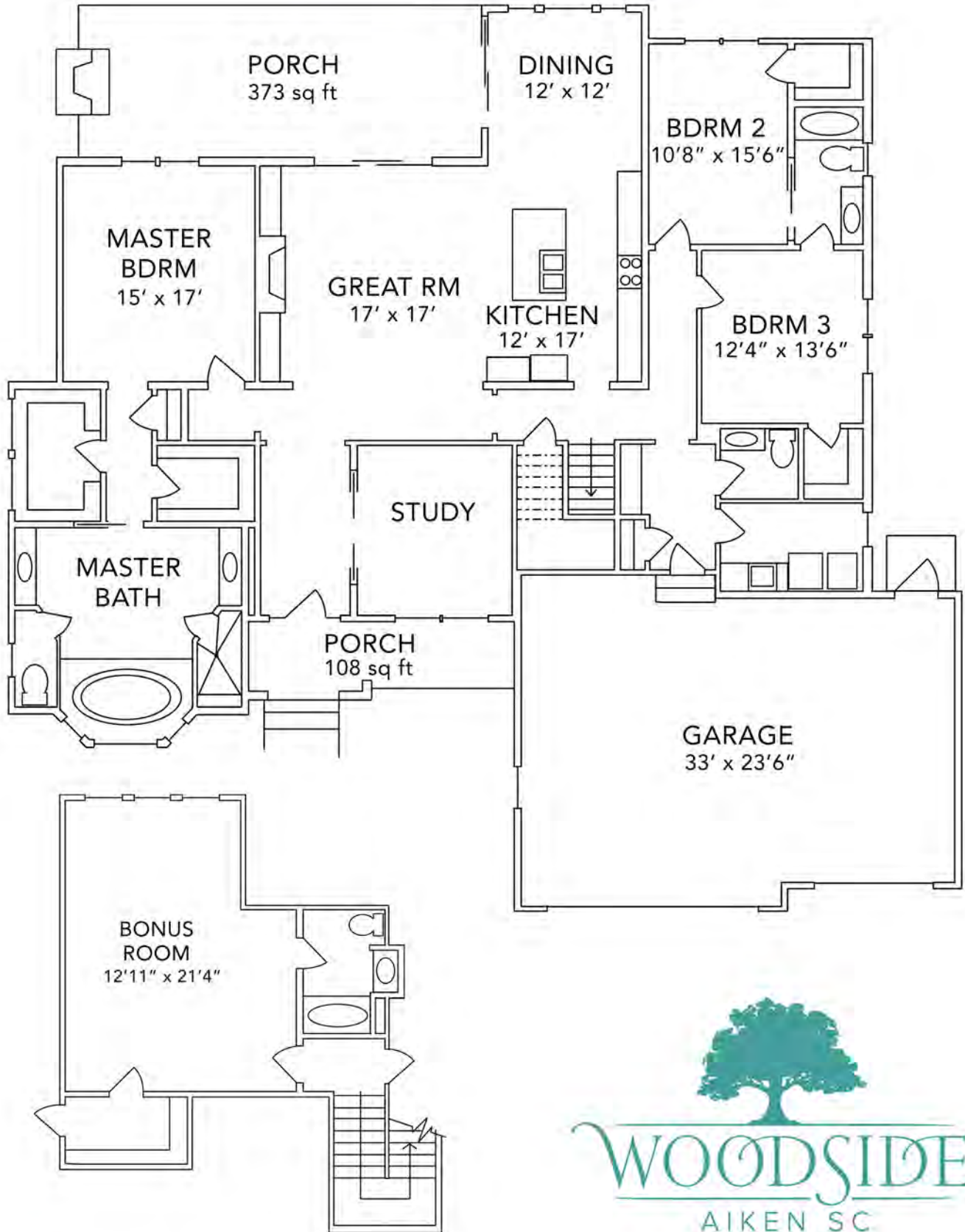
The Great Room, Dining Room, Master Suite, expansive Covered Rear Porch and Grilling Patio all offer breathtaking views of hole 4 on the Reserve Hollow Creek course.

Oversized Garage with Mud Room entry and generous closet spaces add to the value of this home.

Energy efficient features include upgraded insulation, "Home-Tight" sealing package, radiant barrier sheathing, 14 SEER HVAC units, and vinyl low-e windows and doors.

For more information, please call 800.648.3052 or visit us at [www.woodsidecommunities.com](http://www.woodsidecommunities.com)

# THE ASHDALE



F122718

For more information, please call 800.648.3052 or visit us at [www.woodsidecommunities.com](http://www.woodsidecommunities.com)



# THE ASHLEY III

from the Classic Collection

3 bedrooms, 2.5 Baths - 2,518 base square feet



## The Ashley III

Designer features include dramatic ceilings- barreled ceiling in the entry Foyer and over Master tub, wood trimmed beamed ceiling in the Great Room, slat ceiling in the Dining Area and vaulted tray ceiling in the Master Bedroom.

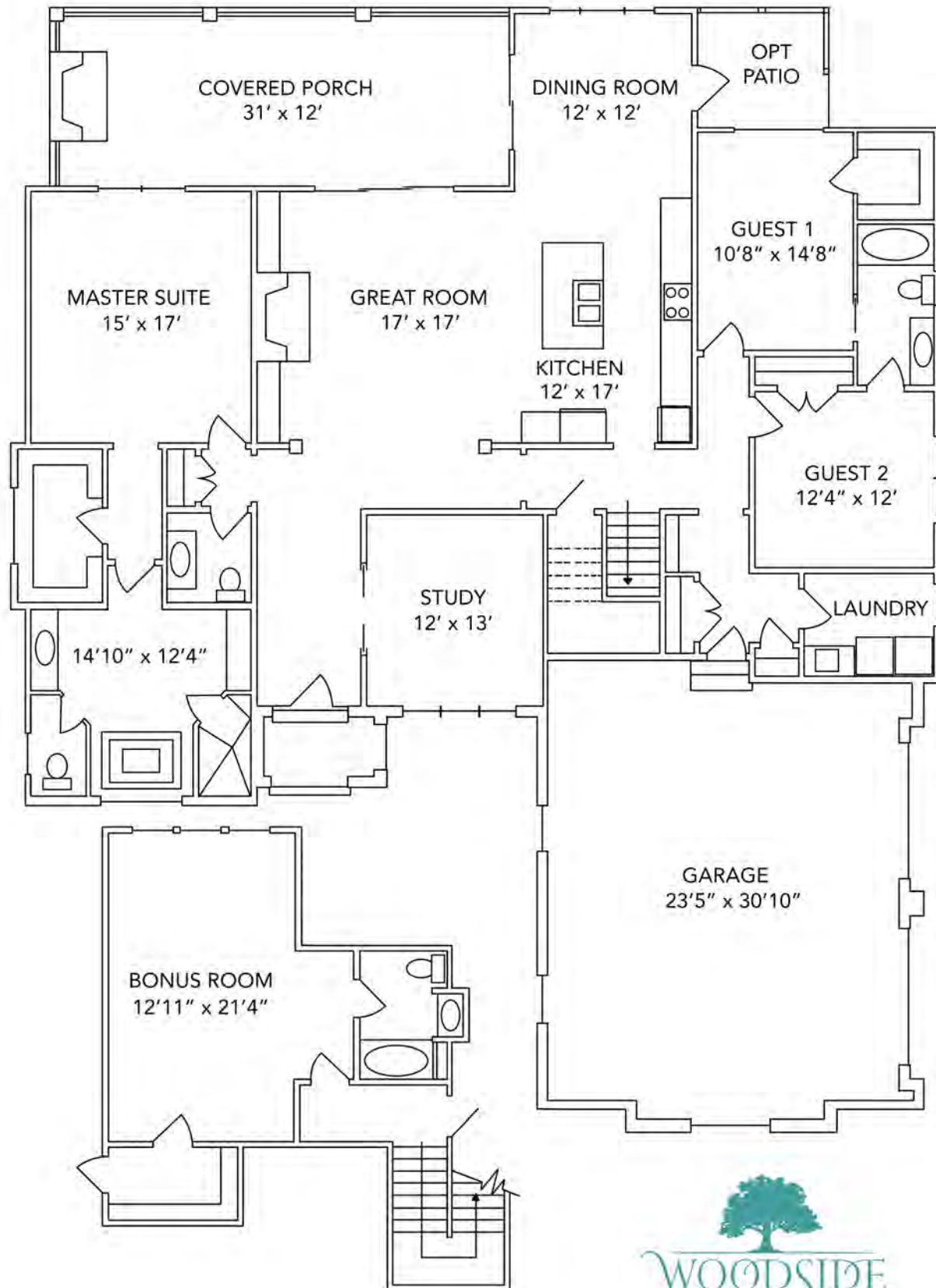
Granite countertops in the Kitchen, Master Bath, and Powder Room, as well as a decorative hood and backsplash in the Kitchen highlight the elegance of this home.

Oversized Garage with Mud Room entry and generous closet spaces add to the value of this home.

Energy efficient features include upgraded insulation, "Home-Tight" sealing package, radiant barrier sheathing, 14 SEER HVAC units, and vinyl low-e windows and doors.

For more information, please call 800.648.3052 or visit us at [www.woodsidecommunities.com](http://www.woodsidecommunities.com)

# THE ASHLEY III



F041123

For more information, please call 800.648.3052 or visit us at [www.woodsidecommunities.com](http://www.woodsidecommunities.com)



# THE BERKELEY

from the Classic Collection

3 bedrooms, 2 Baths - 2,194 square feet



## The Berkeley plan

Open floorplan includes 2,194 square feet of relaxed living all on one floor.

Kitchen features beautiful Wellborn cabinets and a large center island.

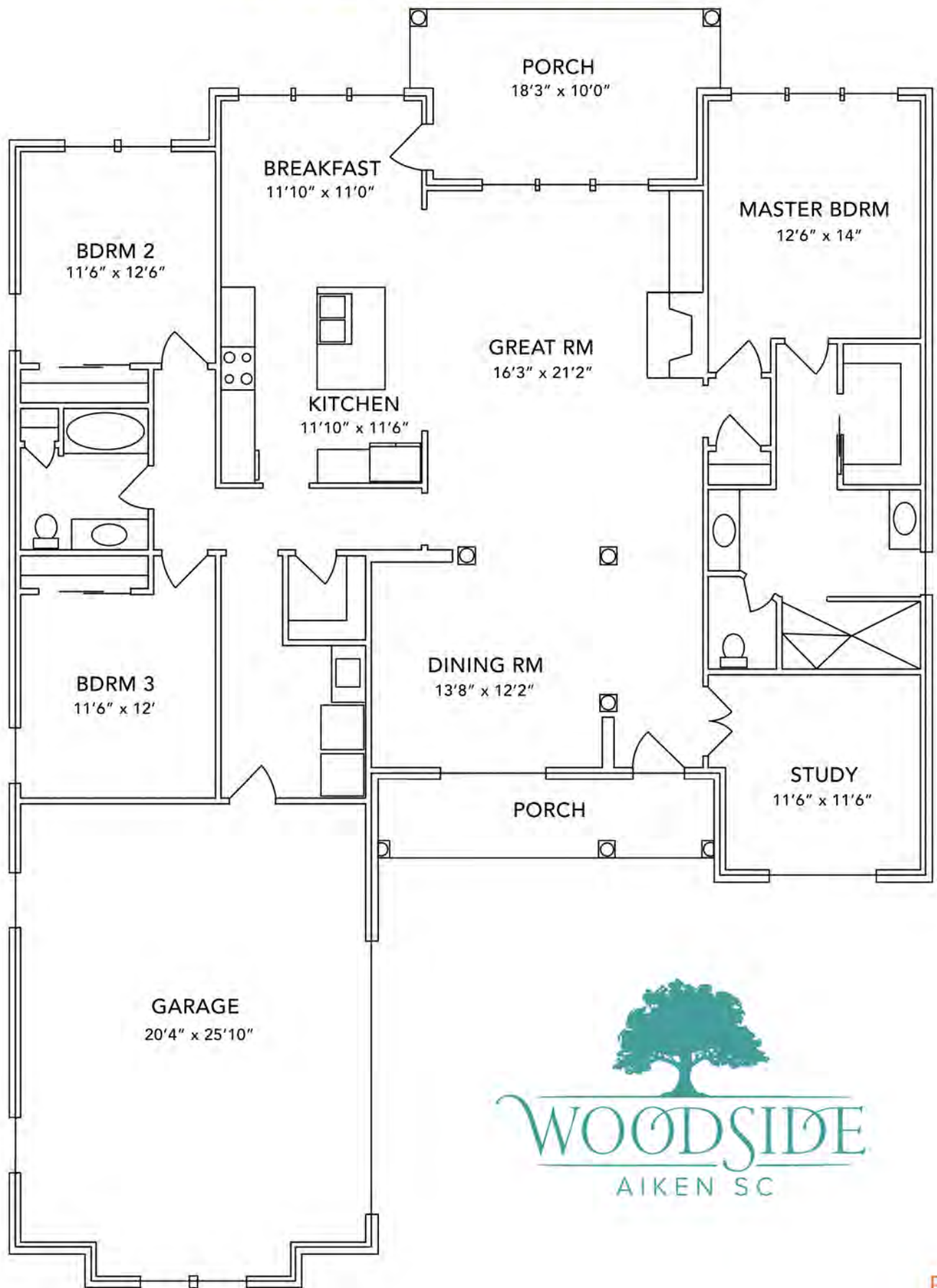
Authentic hardwood floors throughout the main living areas,  
lush carpet in the bedrooms and tile in all the bathrooms.

Spacious rear Covered Porch is perfect for fantastic outdoor living.

Quality construction features brick walls, insulated vinyl windows  
and an energy efficient 13 SEER HVAC system.

For more information, please call 800.648.3052 or visit us at [www.woodsidecommunities.com](http://www.woodsidecommunities.com)

# THE BERKELEY



F32421

For more information, please call 800.648.3052 or visit us at [www.woodsidecommunities.com](http://www.woodsidecommunities.com)



# THE LAURENS

from the Classic Collection

3 Bedrooms, 2 Baths - 2,375 square feet



## The Laurens

This elegant home provides the perfect combination of luxurious living and utilization in a compact, open floor plan.

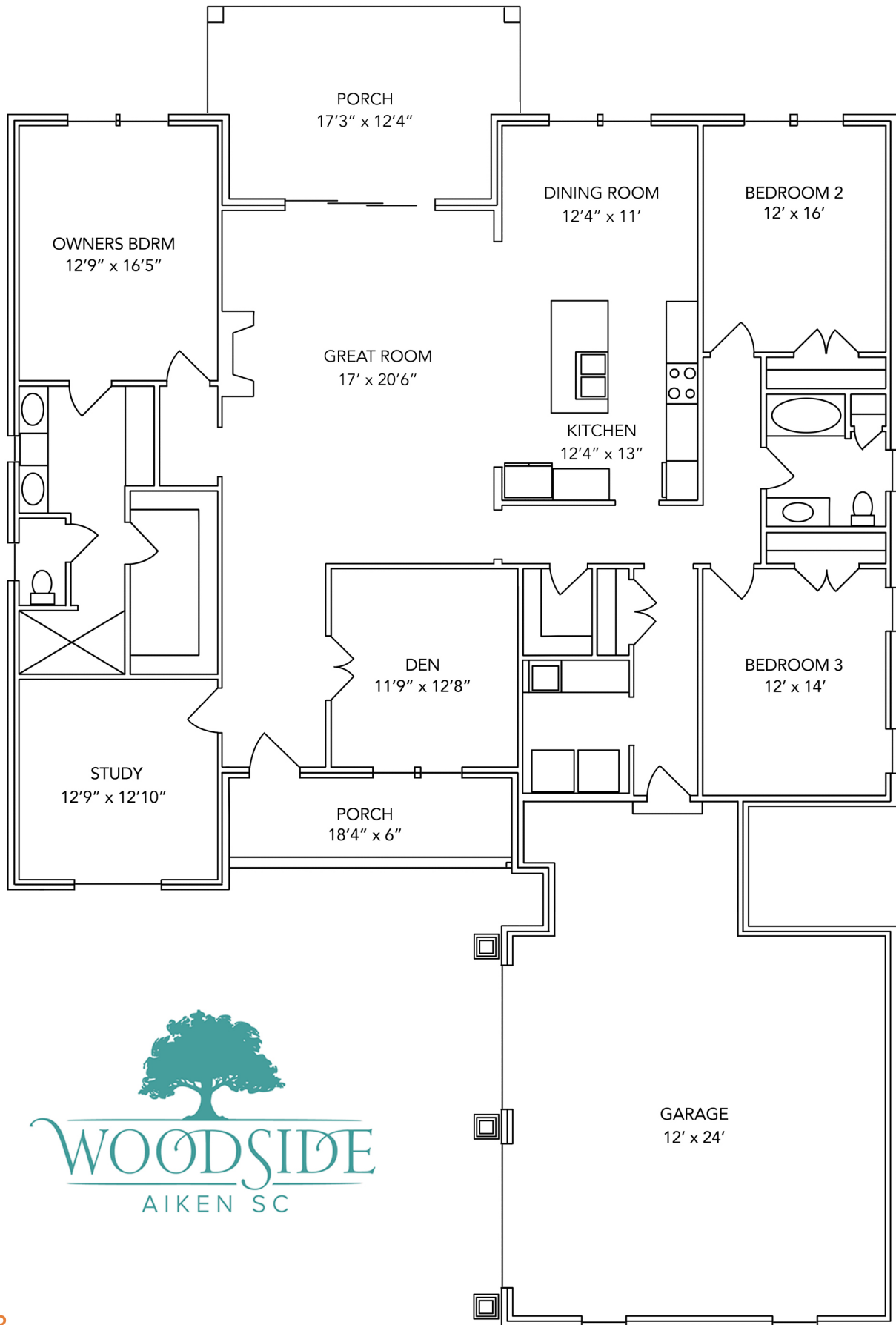
The spacious Owners Suite features a large walk-in closet, oversized shower, dual sinks, and a private water closet.

The welcoming rear Covered Porch offers the best in indoor and outdoor living and entertaining.

Energy efficient features include Tech Shield roof sheathing, low-e Andersen vinyl windows and doors, a high efficiency HVAC system, and a "Home Tight" sealing package.

For more information, please call 800.648.3052 or visit us at [www.woodsidecommunities.com](http://www.woodsidecommunities.com)

# THE LAURENS



F112223

For more information, please call 800.648.3052 or visit us at [www.woodsidecommunities.com](http://www.woodsidecommunities.com)





# THE OAKMONT

from the Classic Collection

2 bedrooms, 2 Baths - 2,138 base square feet



## The Oakmont

This elegant home provides the perfect combination of luxurious living and utilization in a compact, open floor plan.

The Master Suite is conveniently located on the main level with a large walk-in closet, oversized shower, dual sinks, and a private water closet.

The spacious rear Covered Porch offers the best in indoor and outdoor living and entertaining.

Energy efficient features include Tech Shield roof sheathing, low-e Andersen vinyl windows and doors, a high efficiency HVAC system, and a "Home Tight" sealing package

For more information, please call 800.648.3052 or visit us at [www.woodsidecommunities.com](http://www.woodsidecommunities.com)

# THE OAKMONT



F35210

For more information, please call 800.648.3052 or visit us at [www.woodsidecommunities.com](http://www.woodsidecommunities.com)