



# THE POLO

from the Courtyard Collection

3 bedrooms, 2.5 Baths - 2,622 base square feet



## The Polo plan

Beautifully appointed oversized Owners Suite features a vaulted tray ceiling, tremendous walk-in closet, split vanities, soaking tub, and walk-in shower.

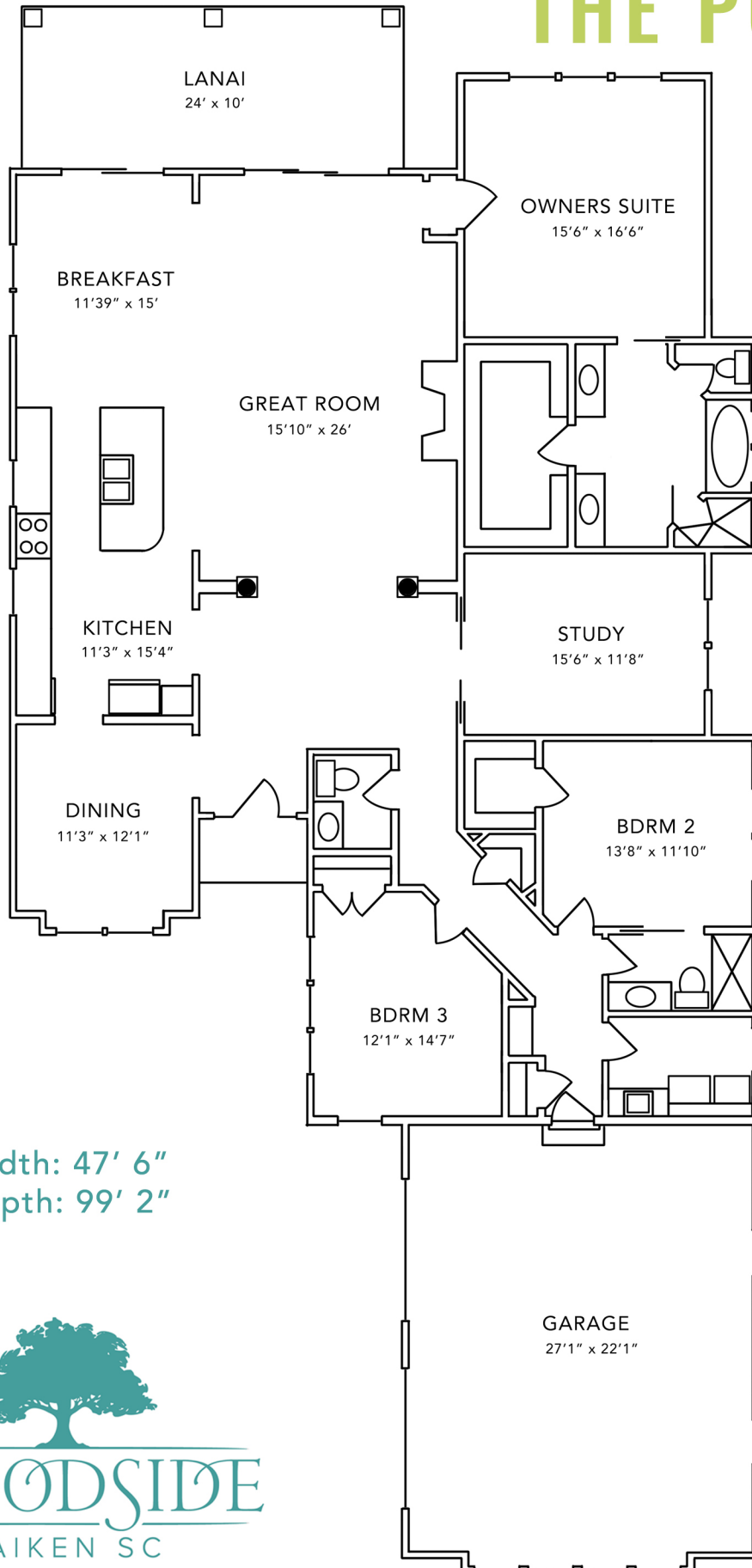
Gourmet cook's dream Kitchen includes an abundance of custom cabinetry, center island with sink and breakfast bar, granite countertops, and stainless steel appliances.

Rich hardwood flooring throughout the main living areas.

Ultra-high efficiency and "green" features include Tech Shield roof sheathing, Low-E windows and doors and 15 SEER HVAC systems with 95% efficiency rating.

For more information, please call 800.648.3052 or visit us at [www.woodsidecommunities.com](http://www.woodsidecommunities.com)

# THE POLO



Width: 47' 6"  
Depth: 99' 2"



F062524

Measurements are subject to change

For more information, please call 800.648.3052 or visit us at [www.woodsidecommunities.com](http://www.woodsidecommunities.com)



# THE POLO SL

from the Courtyard Collection

4 bedrooms, 3.5 Baths - 3,156 base square feet



## The Polo SL plan

Beautifully appointed oversized Owners Suite features a vaulted tray ceiling, tremendous walk-in closet, split vanities, soaking tub, and walk-in shower.

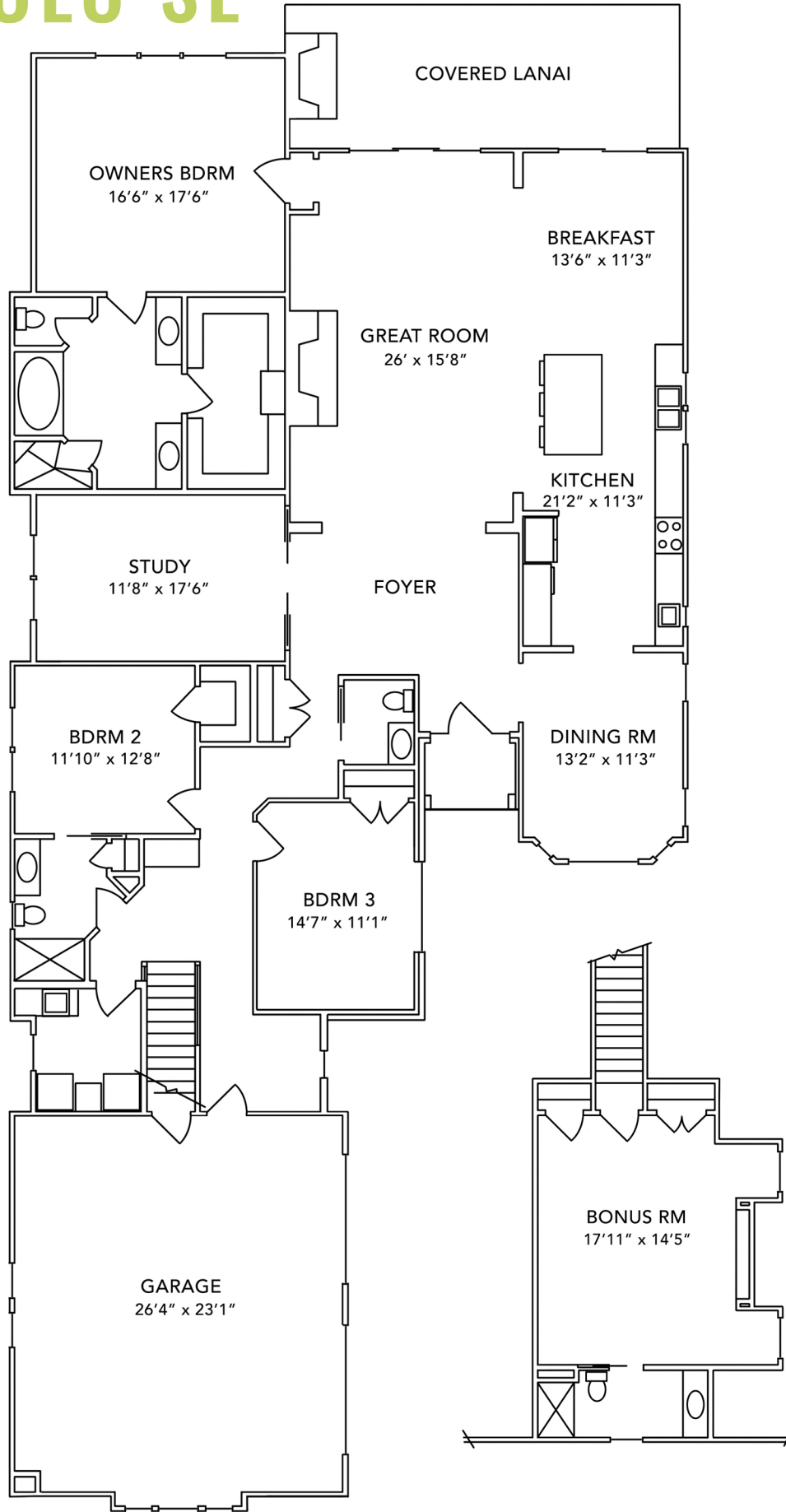
Gourmet cook's dream Kitchen includes an abundance of custom cabinetry, center island with sink and breakfast bar, granite countertops, and stainless steel appliances.

Rich hardwood flooring throughout the main living areas.

Ultra-high efficiency and "green" features include Tech Shield roof sheathing, Low-E windows and doors and 14 SEER HVAC systems.

For more information, please call 800.648.3052 or visit us at [www.woodsidecommunities.com](http://www.woodsidecommunities.com)

# THE POLO SL



F72023

For more information, please call 800.648.3052 or visit us at [www.woodsidecommunities.com](http://www.woodsidecommunities.com)



# THE STEEPLCHASE

from the Courtyard Collection

3 bedrooms, 2 Baths - 2,234 base square feet



## The Steeplechase plan

Kitchen features a large center island, custom cabinetry, granite countertops, stainless steel appliances, and Breakfast Room.

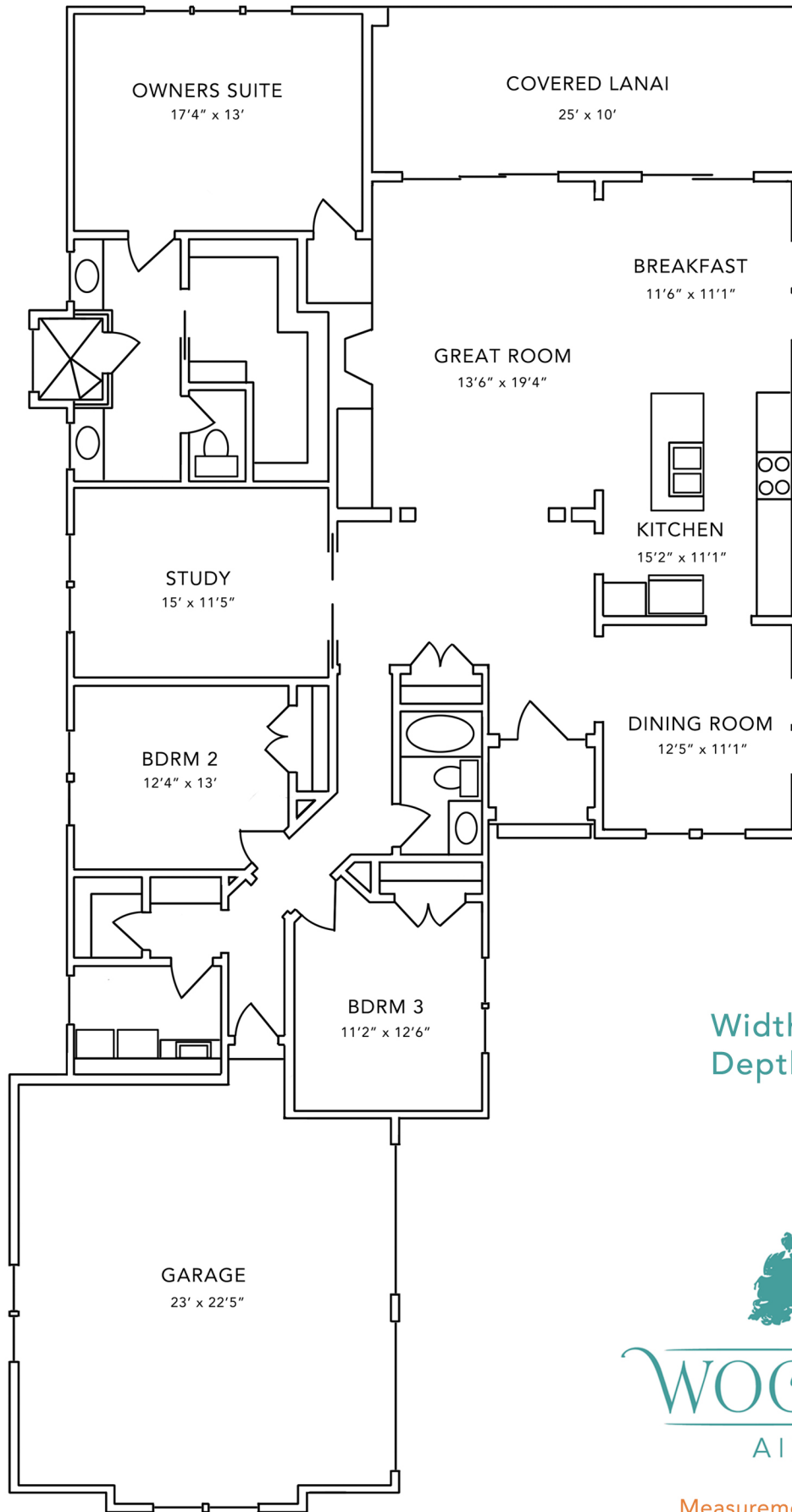
Master Suite is the perfect retreat with expansive window views, enormous walk-in closet, oversized walk-in shower with bench, and dual vanities.

Study makes a perfect Office or Sitting Room.

Ultra-high efficiency and "green" features include Tech Shield roof sheathing, Low-E windows and doors and 15 SEER HVAC systems with 95% efficiency rating.

For more information, please call 800.648.3052 or visit us at [www.woodsidecommunities.com](http://www.woodsidecommunities.com)

# THE STEEPLECHASE



Width: 46' 1"  
Depth: 89'



F062524

Measurements are subject to change

For more information, please call 800.648.3052 or visit us at [www.woodsidecommunities.com](http://www.woodsidecommunities.com)