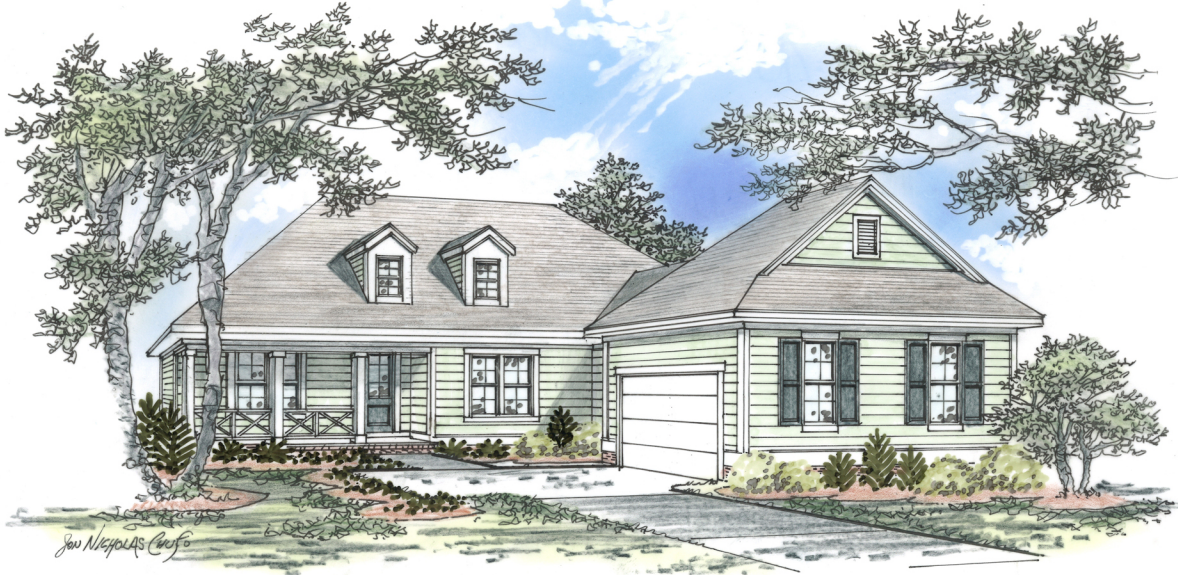




THE ALEXANDER II

from the Meadows Collection

3 bedrooms, 2.5 Baths - 2,002 square feet



The Alexander II

Designed by John Tee, an Atlanta-based architect with extensive *Southern Living* home plan design experience.

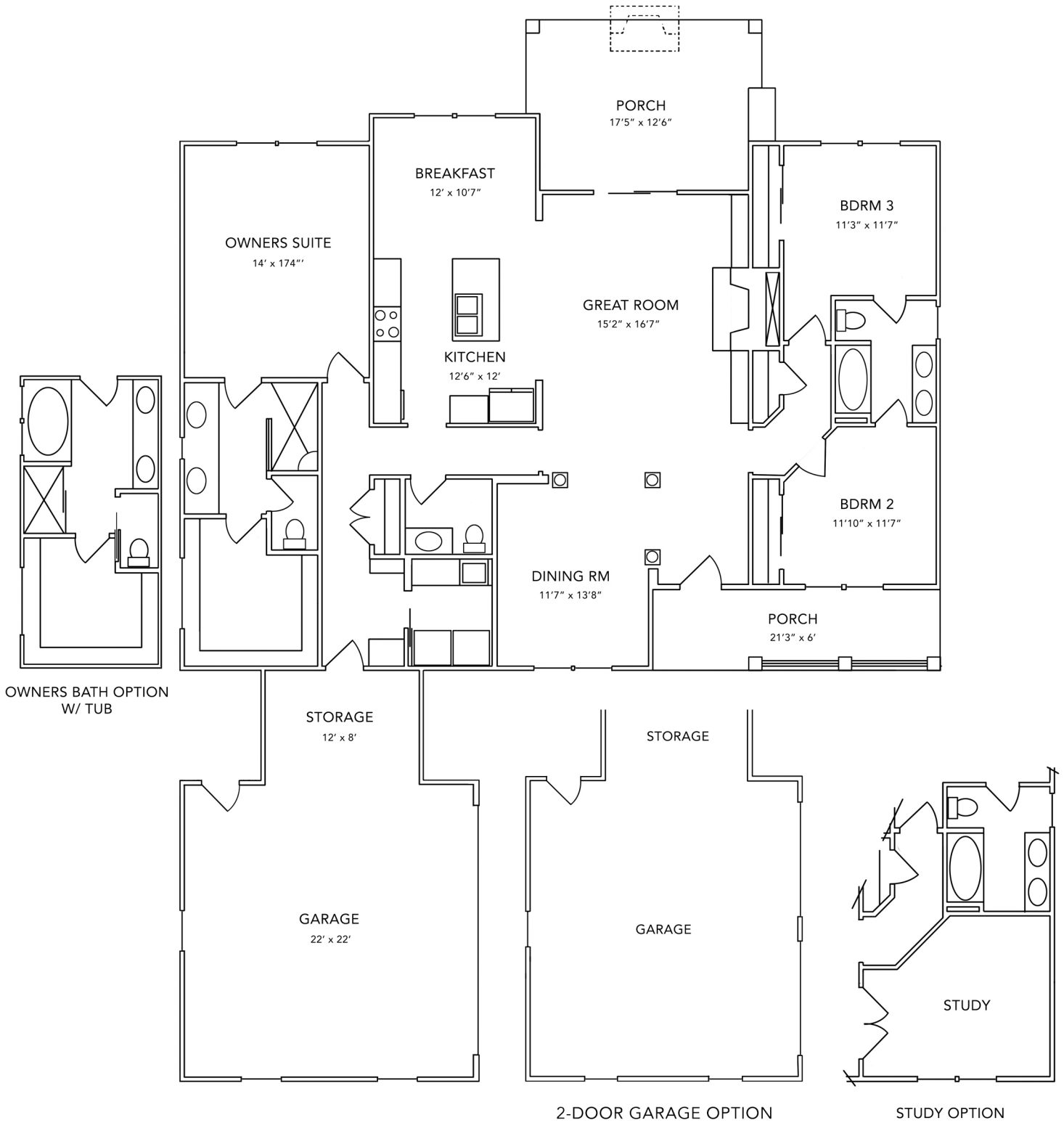
Take in stunning views from the Great Room, Breakfast Room, Owners Suite, and Covered Rear Porch.

Enjoy generous storage space with Oversized Garage with Mud Room entry and conveniently designed closet spaces.

Energy efficient features include Tech Shield roof sheathing, low-e Anderson vinyl windows and doors, a high efficiency HVAC system, and a "Home Tight" sealing package.

For more information, please call 800.648.3052 or visit us at www.woodsidecommunities.com

Alexander II



F062524

Measurements are subject to change

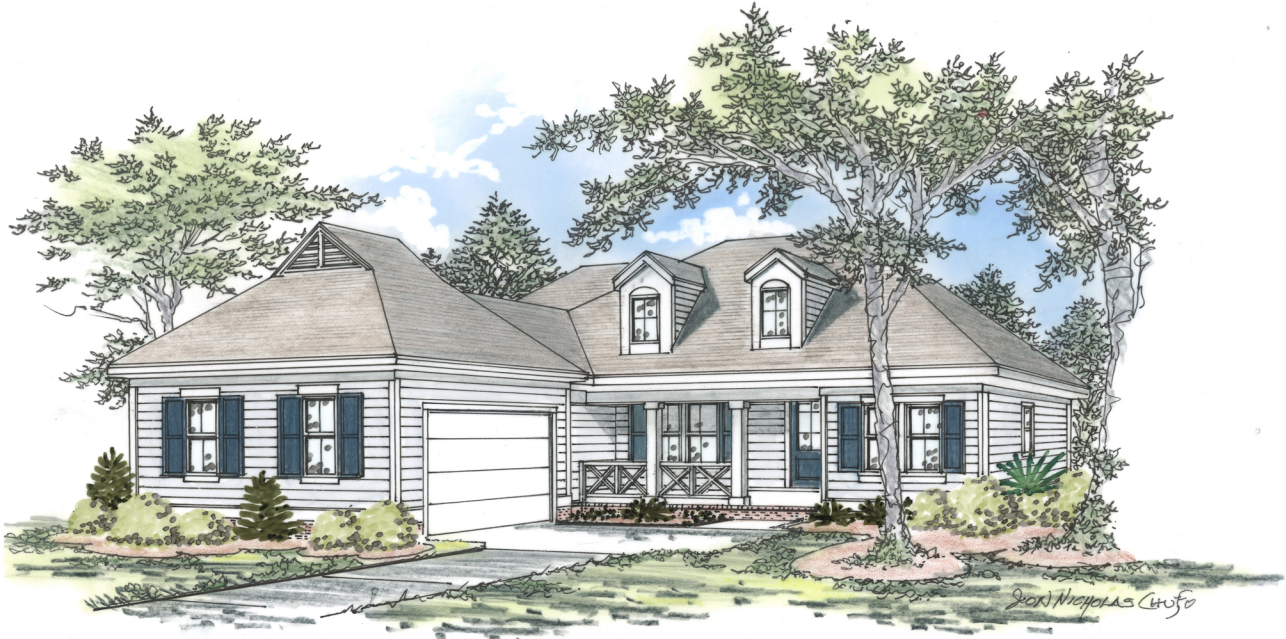
Contact us today to schedule a visit:
Call 803.643.4653 or visit www.woodsidecommunities.com



THE BERKSHIRE

from the Meadows Collection

3 bedrooms, 2 Baths - 2,164 base square feet



The Berkshire plan

Take in stunning views of the lushly landscaped Meadows Park from the Great Rooms, Breakfast room, Owners Suite, and Covered Porch.

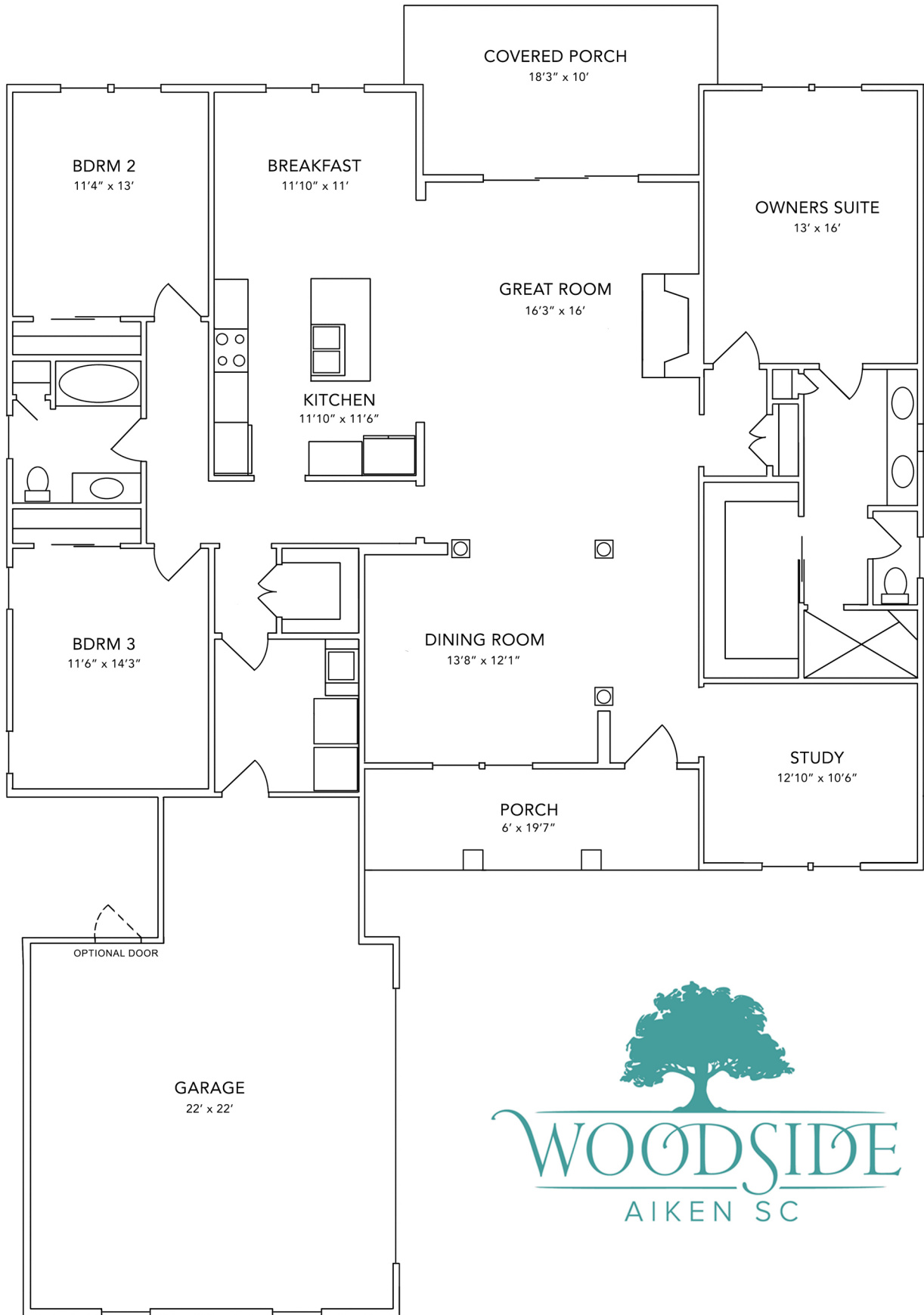
Features include crown molding, luxurious hardwood floors in the main living areas, a gas fireplace, and painted beams.

Designed by John Tee, an Atlanta-based architect with extensive *Southern Living* home plan design experience.

Energy efficient features include Tech Shield roof sheathing, low-e Anderson vinyl windows and doors, a high efficiency HVAC system, and a "Home-tight" sealing package.

For more information, please call 800.648.3052 or visit us at www.woodsidecommunities.com

THE BERKSHIRE



F062524

measurements are subject to change

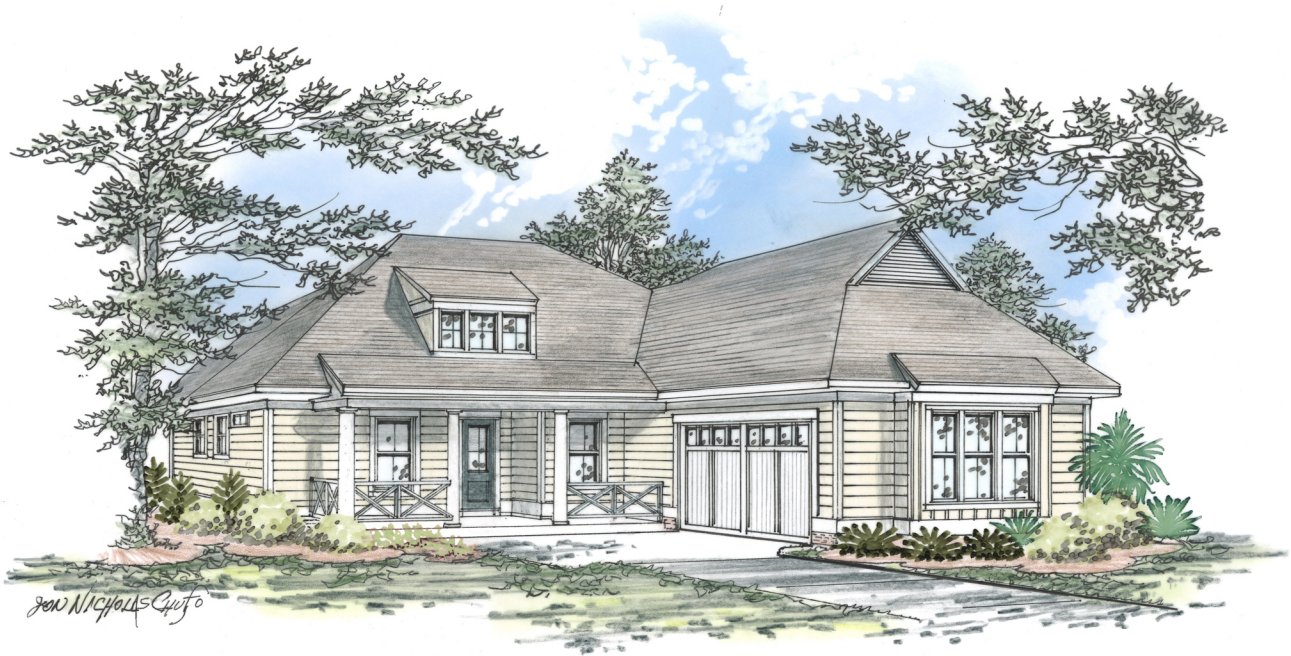
For more information, please call 800.648.3052 or visit us at www.woodsidecommunities.com



THE HALIFAX

from the Meadows Collection

2 bedrooms, 2 Baths - 1,958 base square feet



The Halifax plan

Designer Kitchen features luxurious cabinetry and stainless steel appliances.

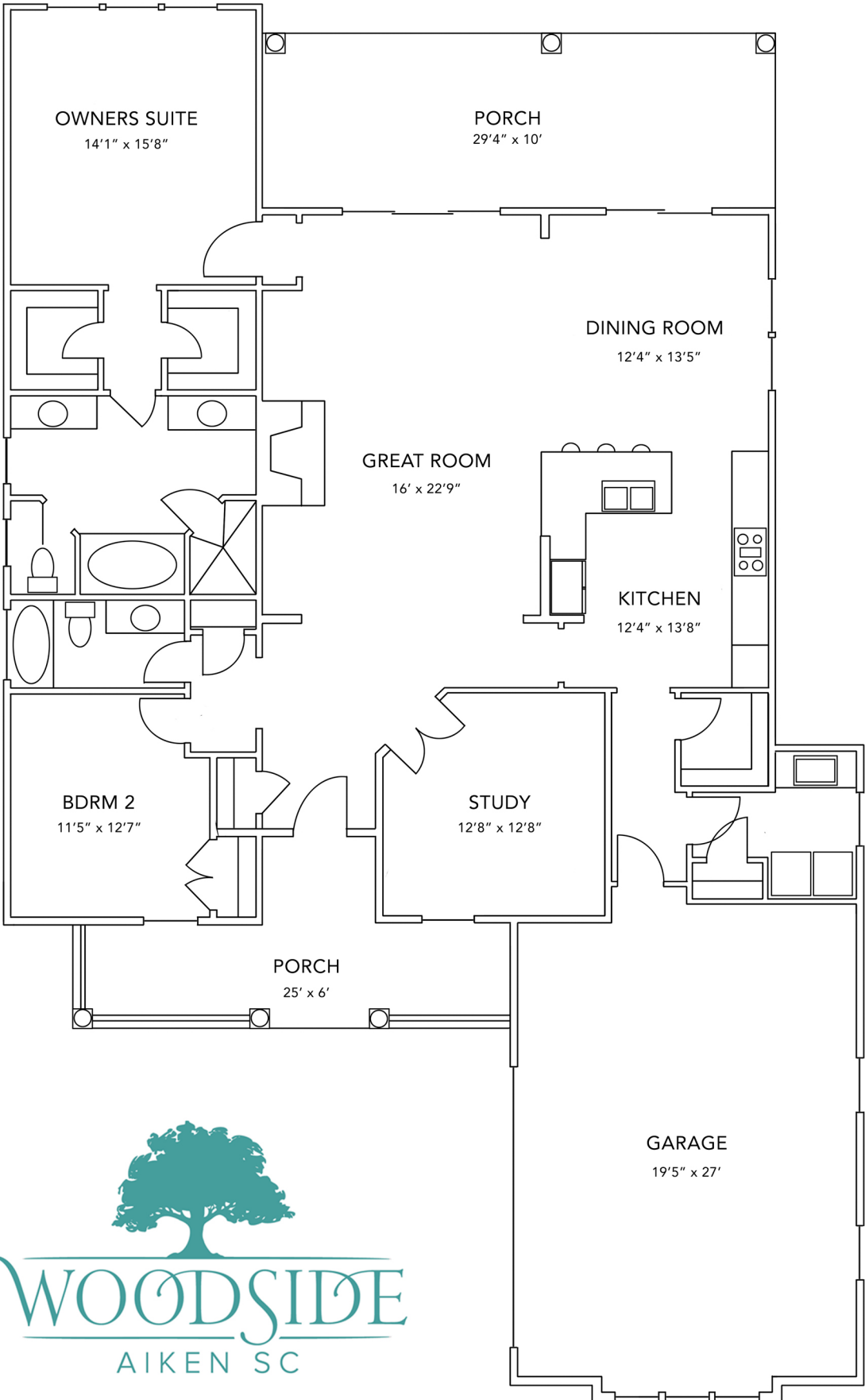
Beautiful hardwood floors throughout the Foyer, Kitchen, Dining Room, Great Room, Study, and Owners Suite.

Spacious covered porches with optional outdoor fireplace make for year-round enjoyment of Aiken's mild climate.

Ultra-high efficiency and "green" features include Tech Shield roof sheathing, Low-E windows and doors, and 15 SEER HVAC system.

For more information, please call 800.648.3052 or visit us at www.woodsidecommunities.com

THE HALIFAX



F062524

Measurements are subject to change

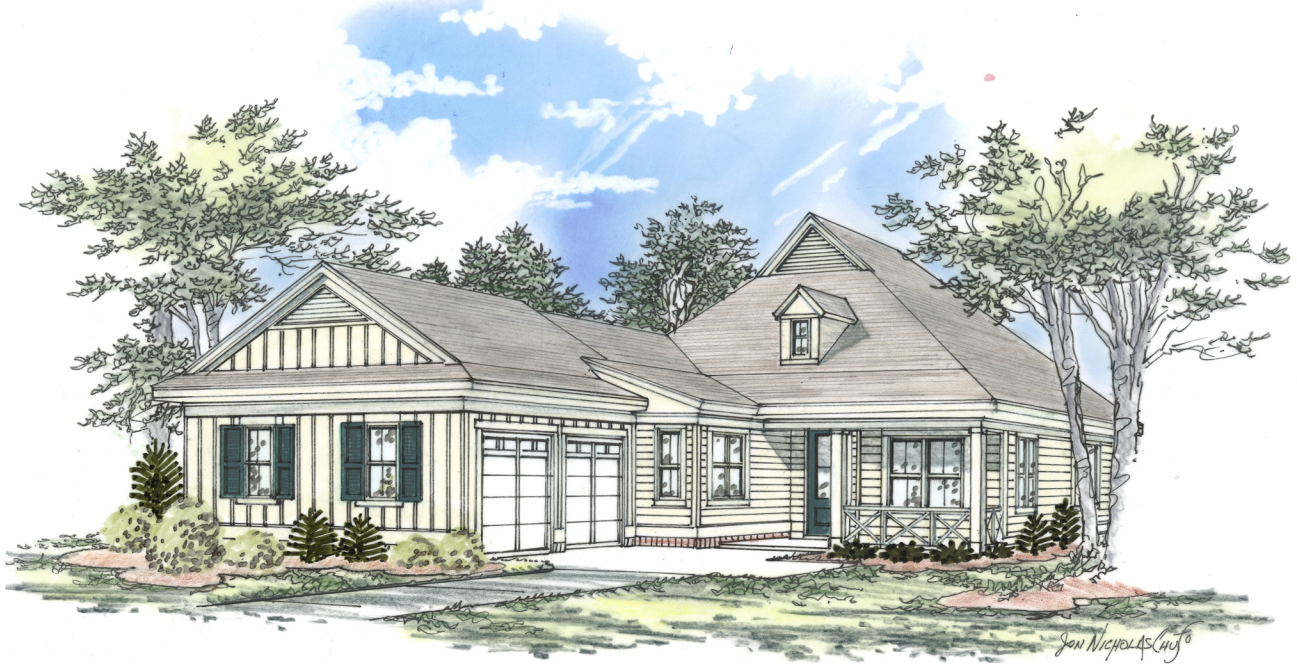
For more information, please call 800.648.3052 or visit us at www.woodsidecommunities.com



THE WHITCOMB

from the Meadows Collection

3 bedrooms, 2 Baths - 2,216 base square feet



The Whitcomb plan

Take in stunning views from the Great Room, open Kitchen, Owners Suite, and expansive Covered Porch.

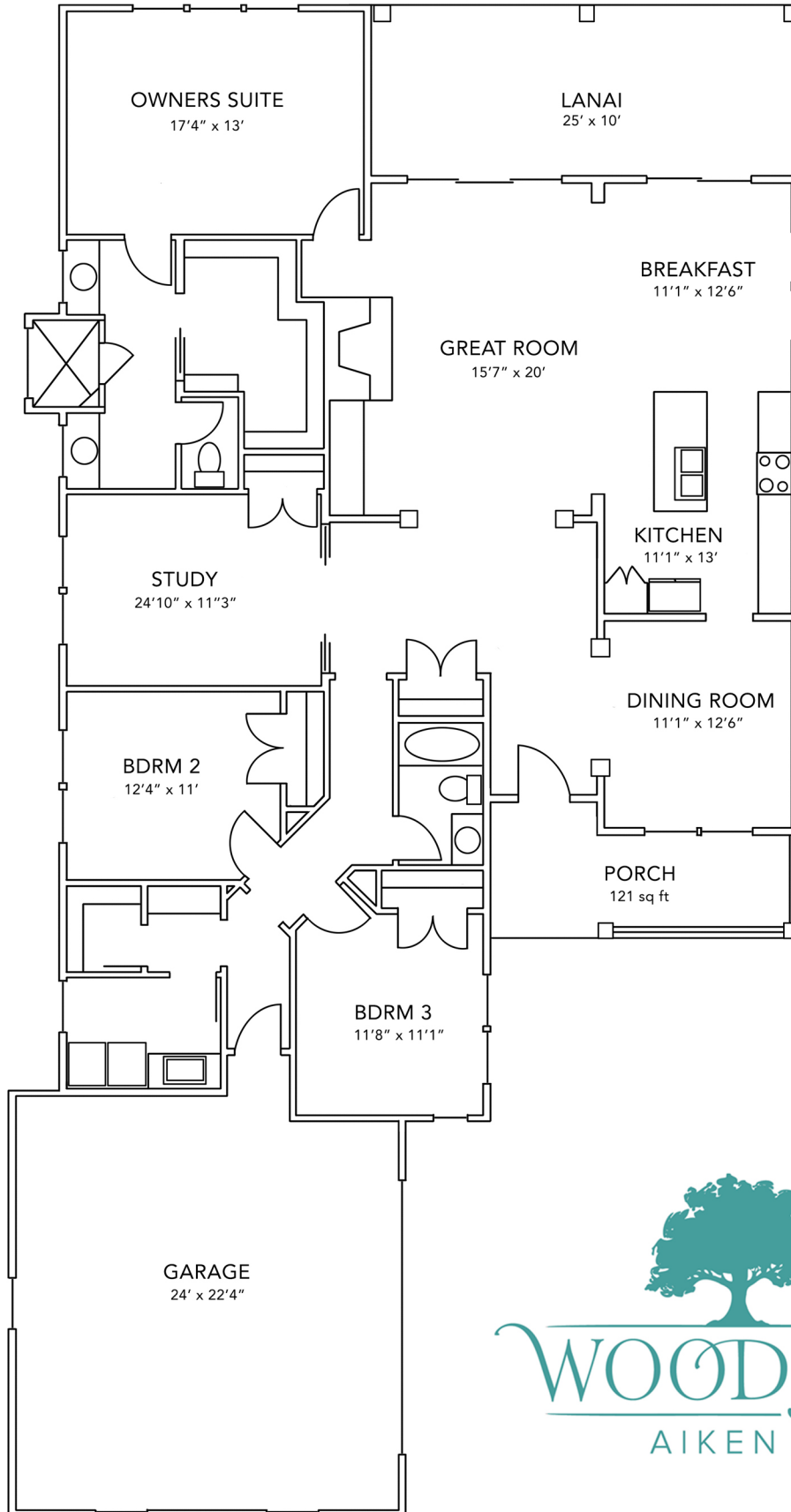
The 121 square foot Front Porch and 250 square Covered Rear Porch are perfect for entertaining outdoors.

Designed by John Tee, an Atlanta-based architect with extensive *Southern Living* home plan design experience.

Energy efficient features include Tech Shield roof sheathing, low-e Anderson vinyl windows and doors, a high efficiency HVAC system, and a "Home Tight" sealing package.

For more information, please call 800.648.3052 or visit us at www.woodsidecommunities.com

THE WHITCOMB



F062524

Measurements are subject to change

For more information, please call 800.648.3052 or visit us at www.woodsidecommunities.com