



THE ASHDALE

from the Classic Collection

3 bedrooms, 2.5 Baths - 2,646 base square feet



The Ashdale

Designer features include dramatic ceilings: barreled ceiling in the entry Foyer and over Owners tub, painted ceiling in the Great Room, and vaulted tray ceiling in the Owners Bedroom.

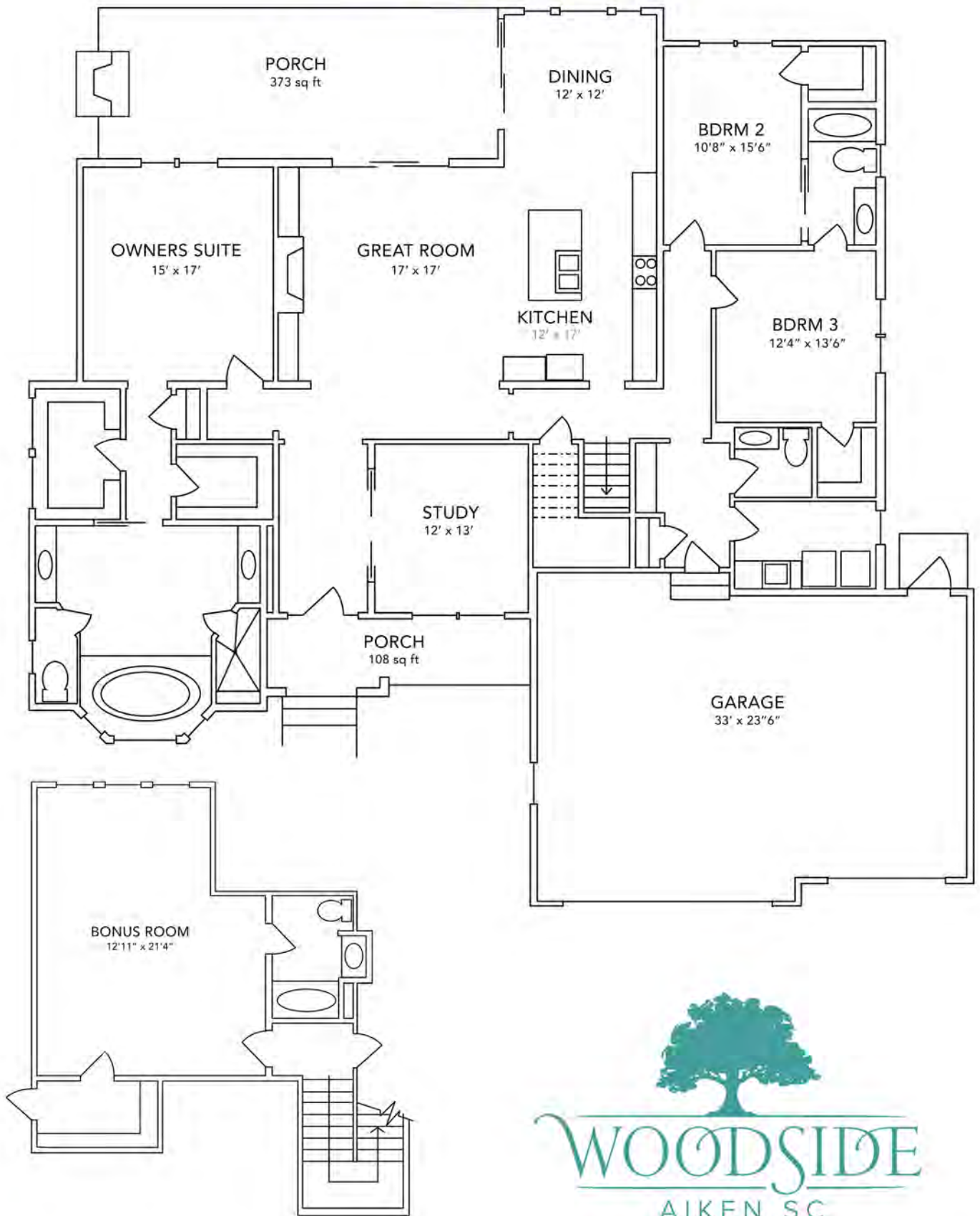
Granite countertops in the Kitchen, Owners Bath, and Powder Room, as well as a decorative hood and backsplash in the Kitchen highlight the elegance of this home.

Oversized Garage with Mud Room entry and generous closet spaces add to the value of this home.

Energy efficient features include upgraded insulation, "Home-Tight" sealing package, radiant barrier sheathing, 15 SEER HVAC units, and vinyl low-e windows and doors.

For more information, please call 800.648.3052 or visit us at www.woodsidecommunities.com

THE ASHDALE



F062524

Measurements are subject to change

For more information, please call 800.648.3052 or visit us at www.woodsidecommunities.com



THE ASHLEY III

from the Classic Collection

3 bedrooms, 2.5 Baths - 2,518 base square feet



The Ashley III

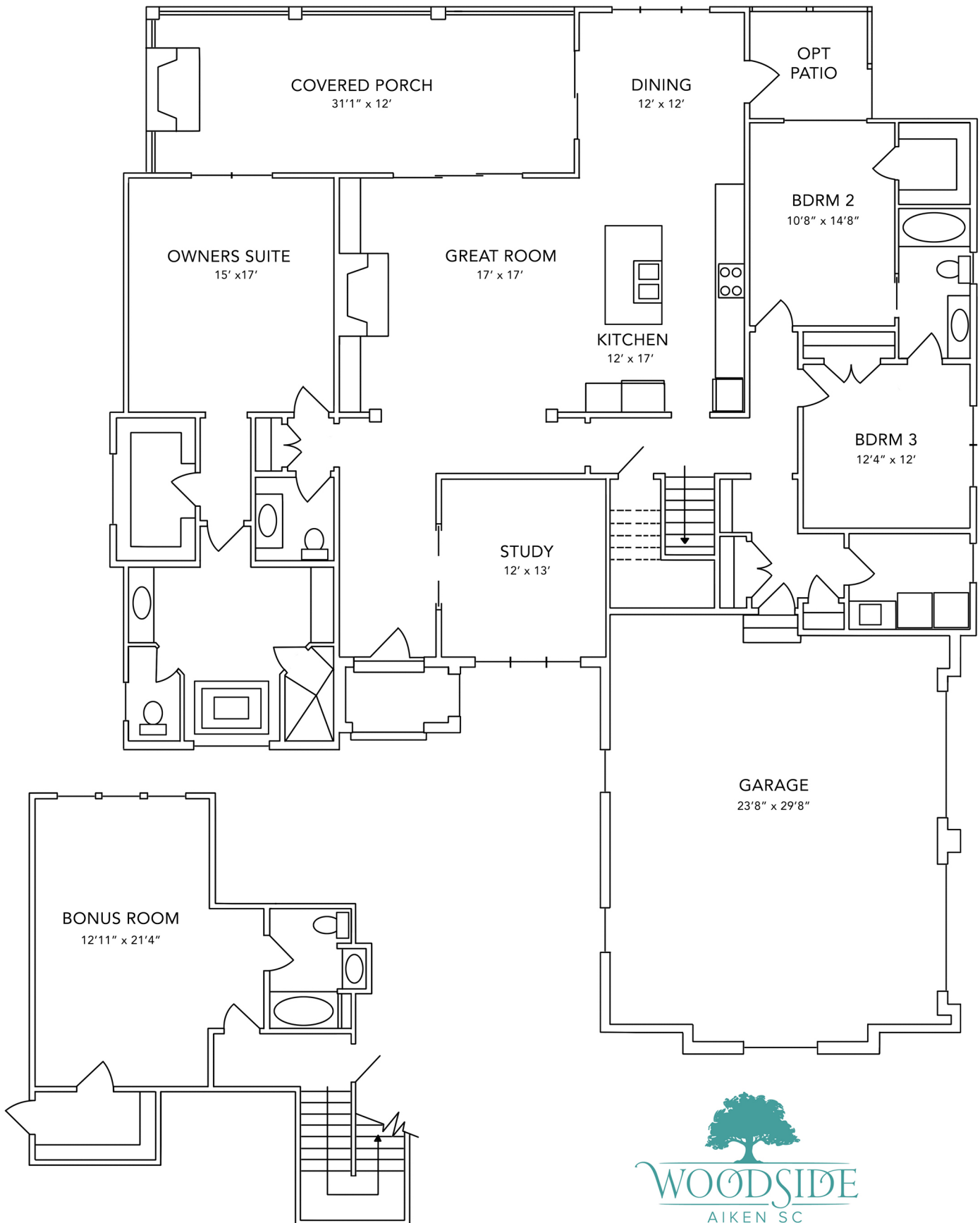
Designer features include dramatic ceilings: barreled ceiling in the entry Foyer and over Owners tub, painted ceiling in the Great Room, and vaulted tray ceiling in the Owners Bedroom.

Granite countertops in the Kitchen, Master Bath, and Powder Room, as well as a decorative hood and backsplash in the Kitchen highlight the elegance of this home.

Oversized Garage with Mud Room entry and generous closet spaces add to the value of this home.

Energy efficient features include upgraded insulation, "Home-Tight" sealing package, radiant barrier sheathing, 15 SEER HVAC units, and vinyl low-e windows and doors.

THE ASHLEY III



F010825

Measurements are subject to change

For more information, please call 800.648.3052 or visit us at www.woodsidecommunities.com



THE BERKELEY

from the Classic Collection

3 bedrooms, 2 Baths - 2,230 square feet



The Berkeley plan

Open floorplan includes 2,230 square feet, brick to brick, of relaxed living.

Kitchen features beautiful Wellborn cabinets and a large center island.

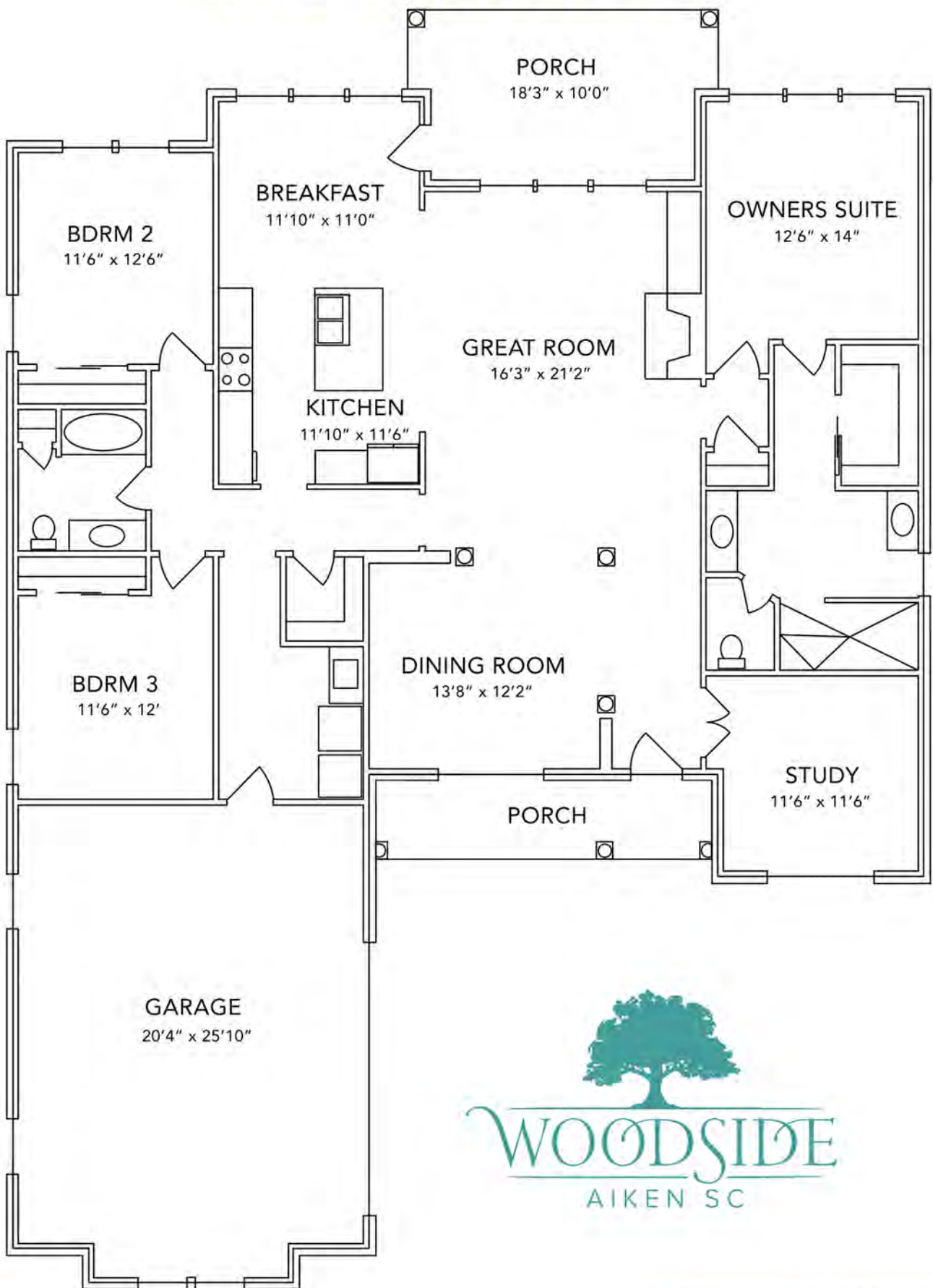
Authentic hardwood floors throughout the main living areas,
lush carpet in the bedrooms, and tile in all the bathrooms.

Spacious rear Covered Porch is perfect for fantastic outdoor living.

Quality construction features brick walls, insulated vinyl windows
and an energy efficient 15 SEER HVAC system.

For more information, please call 800.648.3052 or visit us at www.woodsidecommunities.com

THE BERKELEY



F062524

Measurements are subject to change

For more information, please call 800.648.3052 or visit us at www.woodsidecommunities.com



THE LAURENS

from the Classic Collection

3 Bedrooms, 2 Baths - 2,375 square feet



The Laurens

This elegant home provides the perfect combination of luxurious living and utilization in a compact, open floor plan.

The spacious Owners Suite features a large walk-in closet, oversized shower, dual sinks, and a private water closet.

The welcoming rear Covered Porch offers the best in indoor and outdoor living and entertaining.

Energy efficient features include Tech Shield roof sheathing, low-e Andersen vinyl windows and doors, a high efficiency HVAC system, and a "Home Tight" sealing package.

For more information, please call 800.648.3052 or visit us at www.woodsidecommunities.com

THE LAURENS



F062524

Measurements are subject to change

For more information, please call 800.648.3052 or visit us at www.woodsidecommunities.com



THE OAKMONT

from the Classic Collection

2 bedrooms, 2 Baths - 2,173 base square feet



The Oakmont

This elegant home provides the perfect combination of luxurious living and utilization in a compact, open floor plan.

The Owners Suite is conveniently located on the main level with a large walk-in closet, oversized shower, dual sinks, and a private water closet.

The spacious rear Covered Porch offers the best in indoor and outdoor living and entertaining.

Energy efficient features include Tech Shield roof sheathing, low-e Andersen vinyl windows and doors, a high efficiency HVAC system, and a "Home Tight" sealing package.

For more information, please call 800.648.3052 or visit us at www.woodsidecommunities.com

THE OAKMONT



F062524

Measurements are subject to change

For more information, please call 800.648.3052 or visit us at www.woodsidecommunities.com