



THE POLO

from the Courtyard Collection

3 bedrooms, 2.5 Baths - 2,622 base square feet



The Polo plan

Beautifully appointed oversized Owners Suite features a vaulted tray ceiling, tremendous walk-in closet, split vanities, soaking tub, and walk-in shower.

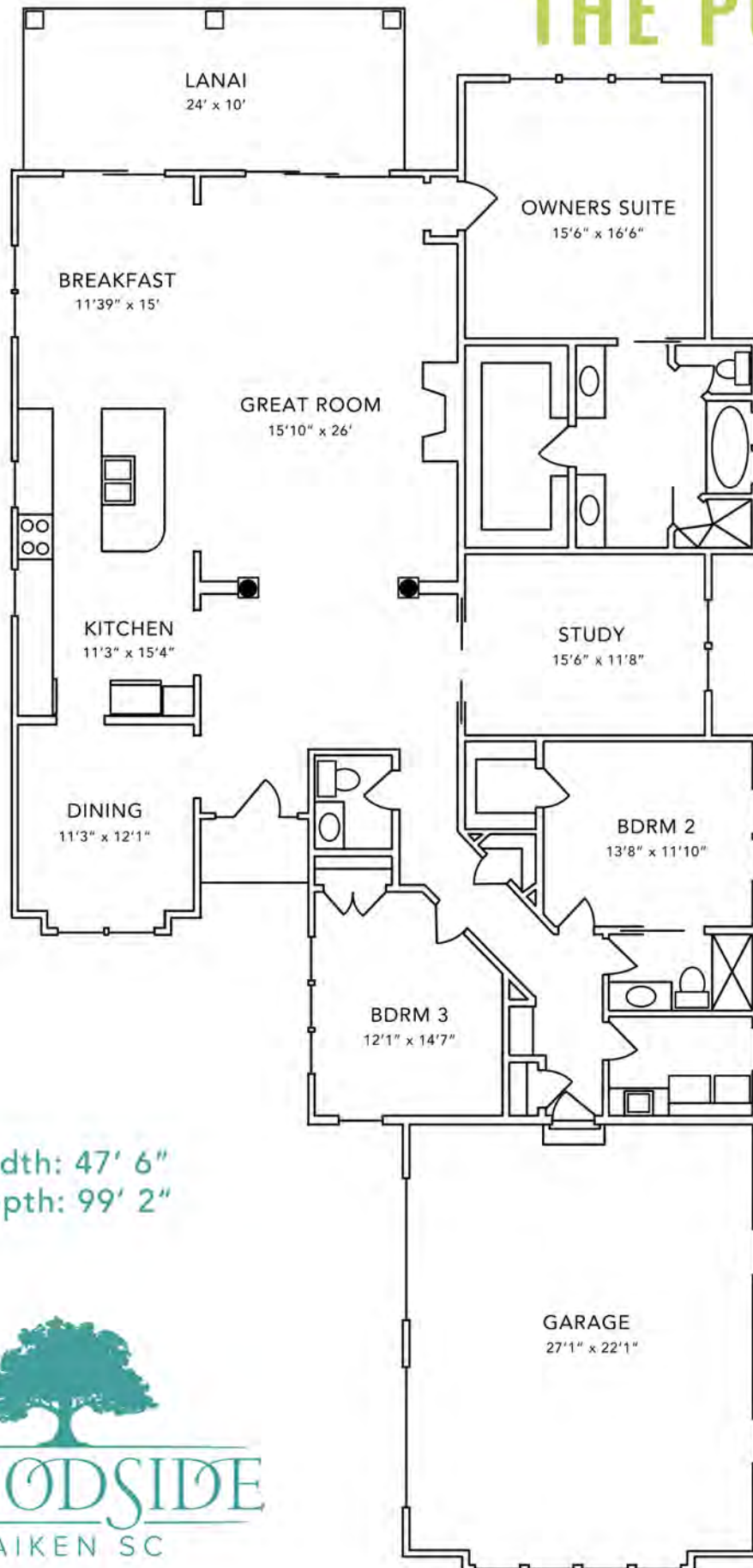
Gourmet cook's dream Kitchen includes an abundance of custom cabinetry, center island with sink and breakfast bar, granite countertops, and stainless steel appliances.

Rich hardwood flooring throughout the main living areas.

Ultra-high efficiency and "green" features include Tech Shield roof sheathing, Low-E windows and doors and 15 SEER HVAC systems with 95% efficiency rating.

For more information, please call 800.648.3052 or visit us at www.woodsidecommunities.com

THE POLO



Width: 47' 6"
Depth: 99' 2"



F062524

Measurements are subject to change

For more information, please call 800.648.3052 or visit us at www.woodsidecommunities.com



THE POLO SL

from the Courtyard Collection

4 bedrooms, 3.5 Baths - 3,156 base square feet



The Polo SL plan

Beautifully appointed oversized Owners Suite features a vaulted tray ceiling, tremendous walk-in closet, split vanities, soaking tub, and walk-in shower.

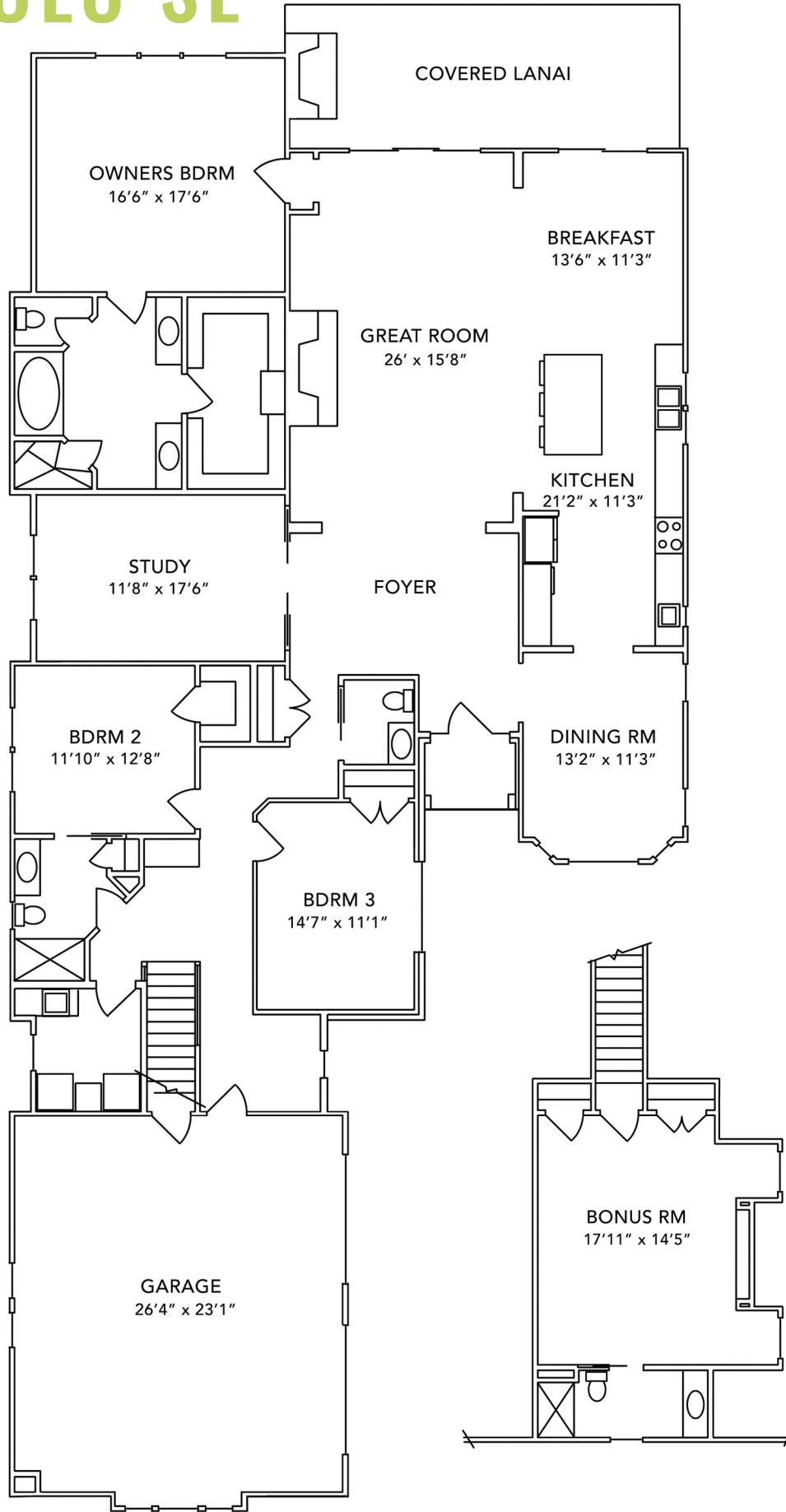
Gourmet cook's dream Kitchen includes an abundance of custom cabinetry, center island with sink and breakfast bar, granite countertops, and stainless steel appliances.

Rich hardwood flooring throughout the main living areas.

Ultra-high efficiency and "green" features include Tech Shield roof sheathing, Low-E windows and doors and 14 SEER HVAC systems.

For more information, please call 800.648.3052 or visit us at www.woodsidecommunities.com

THE POLO SL



F72023

For more information, please call 800.648.3052 or visit us at www.woodsidecommunities.com



THE WHITCOMB

from the Courtyard Collection

3 bedrooms, 2 Baths - 2,216 base square feet



The Whitcomb plan

Take in stunning views from the Great Room, open Kitchen, Owners Suite, and expansive Covered Porch.

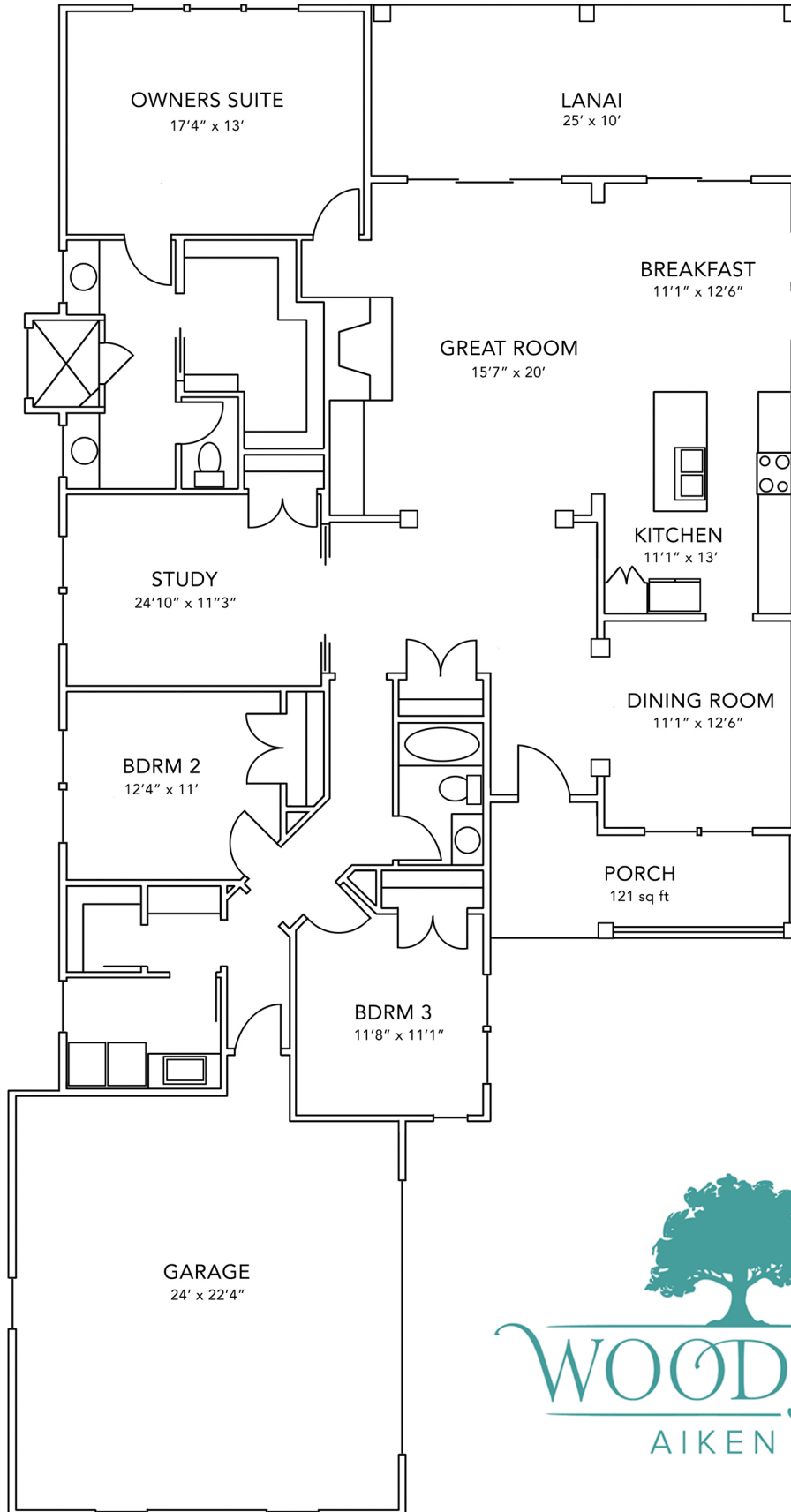
The 121 square foot Front Porch and 250 square Covered Rear Porch are perfect for entertaining outdoors.

Designed by John Tee, an Atlanta-based architect with extensive *Southern Living* home plan design experience.

Energy efficient features include Tech Shield roof sheathing, low-e Anderson vinyl windows and doors, a high efficiency HVAC system, and a "Home Tight" sealing package.

For more information, please call 800.648.3052 or visit us at www.woodsidecommunities.com

THE WHITCOMB



F12924

Measurements are subject to change

For more information, please call 800.648.3052 or visit us at www.woodsidecommunities.com