



THE COURTYARD II

from the Highlands Collection

4 bedrooms, 3 Baths - 3,216 base square feet



The Courtyard II

A luxurious 3,216 square foot home plan with an expansive and dramatic main living area.

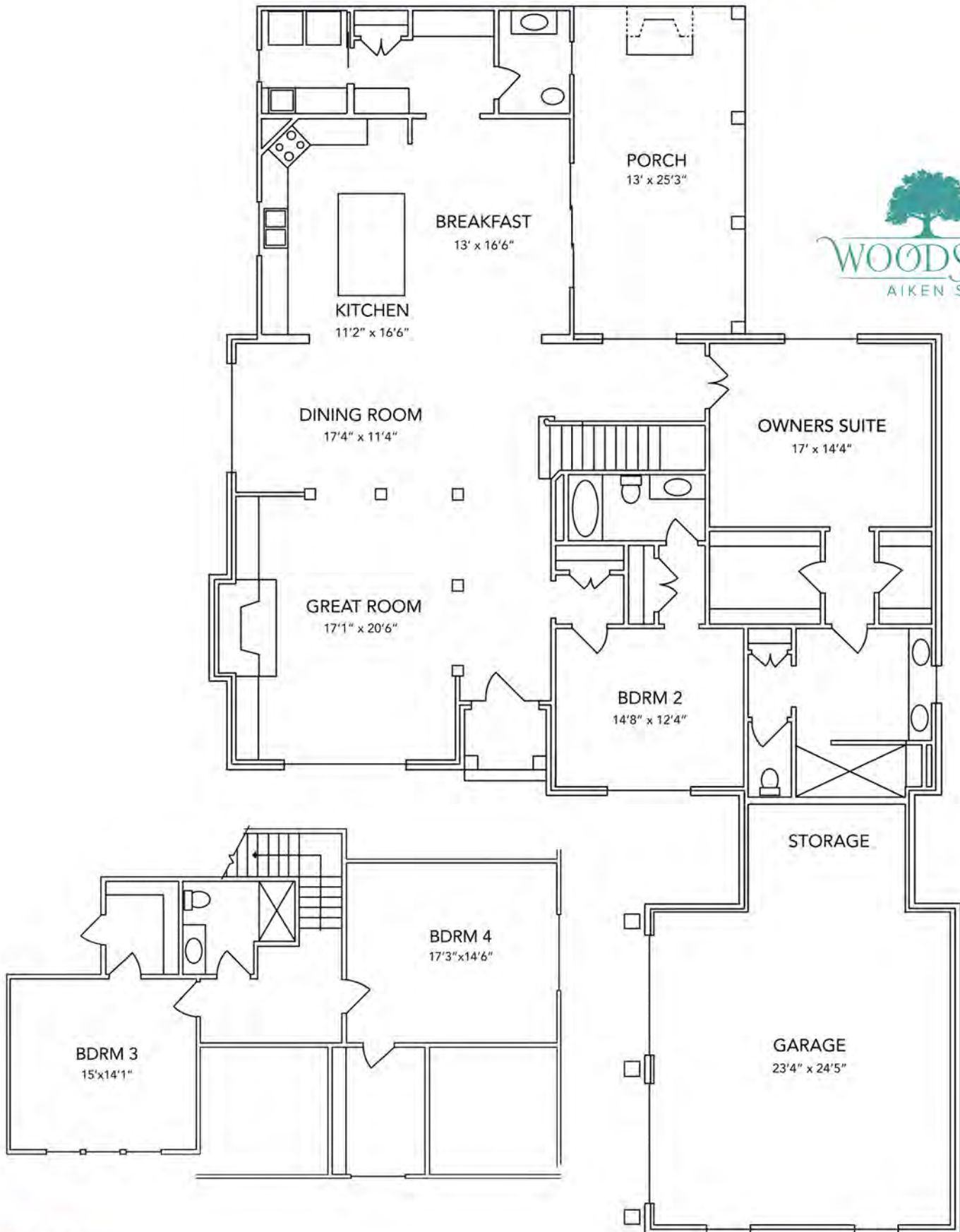
Beautifully arranged Main Level includes an open, light filled plan with the Kitchen, Breakfast Room, Dining Room, and Owners Bedroom situated around a luxurious covered porch with outdoor brick fireplace.

The Second Level consists of two beautiful bedrooms and a bathroom. An over-sized garage with storage adds to the convenience this plan offers.

Energy efficient features include upgraded insulation, "Home-Tight" sealing package, radiant barrier sheathing, 15 SEER HVAC units, and vinyl low-e windows and doors.

For more information, please call 800.648.3052 or visit us at www.woodsidecommunities.com

THE COURTYARD II



F062524

Measurements are subject to change

For more information, please call 800.648.3052 or visit us at www.woodsidecommunities.com



THE ST. REGIS

from the Highlands Collection

3 bedrooms, 2.5 Baths - 3,198 base square feet



The St. Regis plan

Designed for elegance and comfort with a spacious Great Room with focal fireplace as well as a covered Lanai and open Patio for enjoying the South Carolina weather.

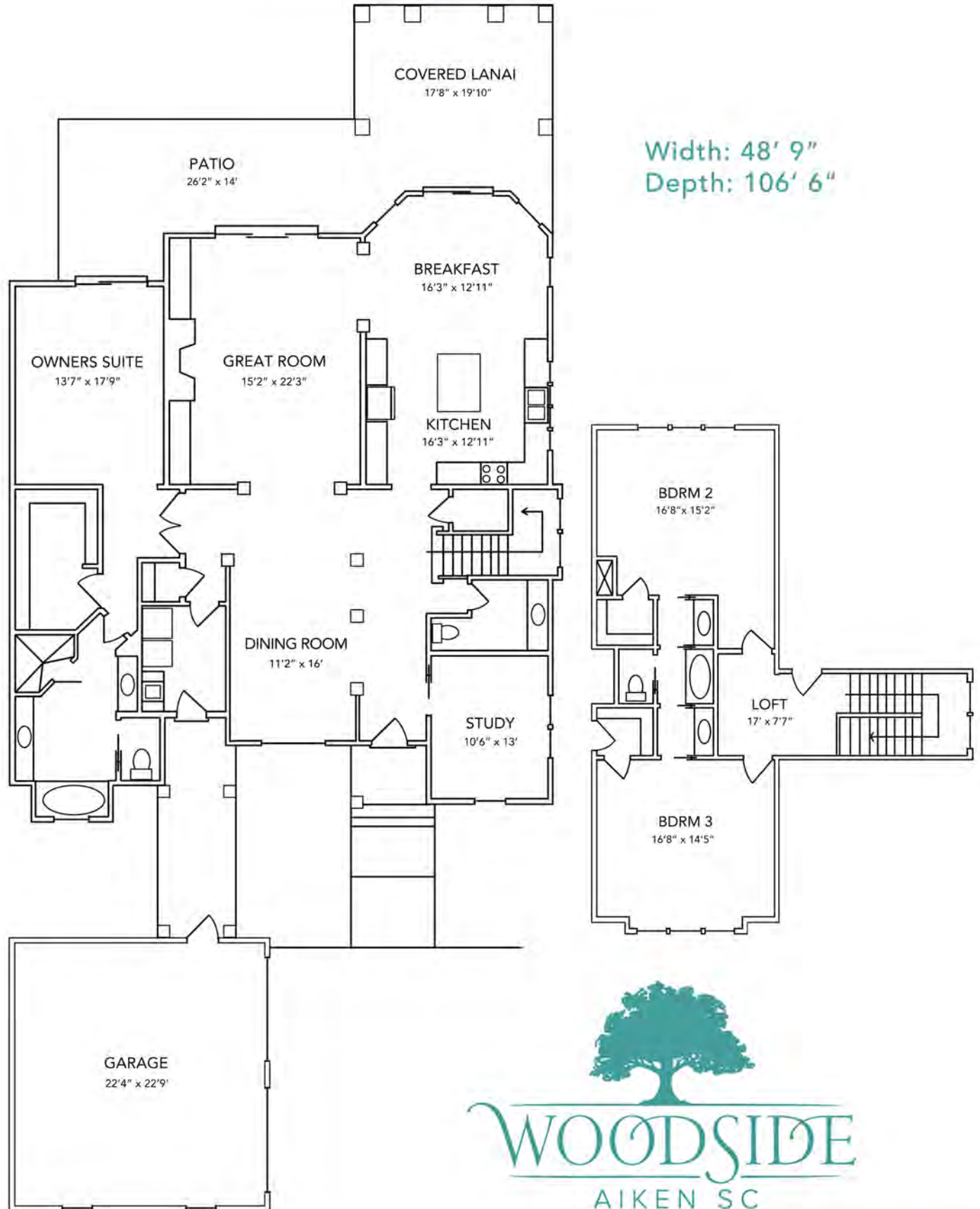
Magnificent Owners Suite has its own formal entry, oversized walk-in closet, dual vanities, large shower, and soaking tub.

Second level is perfect for guests with two Bedrooms a full Bath.

Energy Star[®] stainless steel appliances and wood clad Low-E windows are some of the many energy efficient features of this home.

For more information, please call 800.648.3052 or visit us at www.woodsidecommunities.com

THE ST. REGIS



Width: 48' 9"
Depth: 106' 6"



WOODSIDE
AIKEN SC

F062524

Measurements are subject to change

For more information, please call 800.648.3052 or visit us at www.woodsidecommunities.com